

## **Historic, Archive Document**

Do not assume content reflects current scientific knowledge, policies, or practices.



# ZILKE'S

## BOOK OF BARGAINS

LIBRARY  
RECEIVED  
MAY 1940  
Star  
Signature



### WAYZATA EVERBEARING STRAWBERRIES

\$2.25 PER 100

\$17.48 PER 1000

Wayzata does not make many plants but it surely does produce big crops of berries because all its vitality goes into the fruit, making the berries very large, well formed and evenly colored. More plants can be set on small spaces and greater crops picked. Plants grow exceptionally large and strong on any good fruit soil with good moisture supply. Red clear through no green tips. Wayzata is very hardy and frost resistant. Plant in April, begin picking in July—Keep picking until the last of October. For description see page 2.

*General Nursery Stock, Shrubs, Seeds, Bulbs*

# Zilke Brothers Nursery

*Growers of Select Nursery Stock*

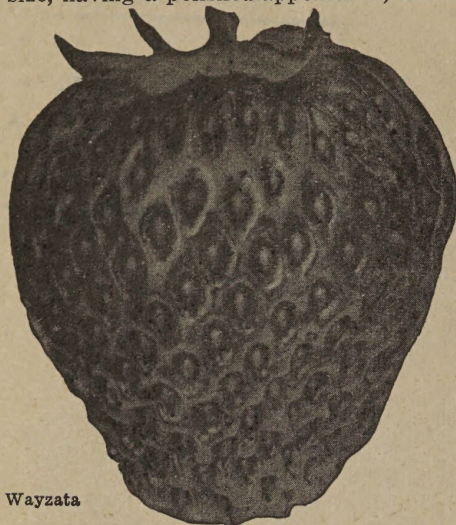
Baroda - 1940 - Michigan



# WAYZATA STRAWBERRY

**WORLD'S BEST EVERBEARING STRAWBERRY  
THREE LARGE CROPS OF FRUIT IN 18 MONTHS**

Wayzata has dark green foliage. This characteristic alone has proven by extensive testing to be of great benefit to any strawberry plant, making the plant disease resistant. Very hardy in withstanding severe cold and severe drought, because of its exceptionally long healthy abundant root system which supplies ample food for a heavy yield of the finest strawberries grown. The berry is a bright red and immense in size, having a polished appearance, usually wedge shaped, making them an easy packer and gives them an attractive appearance in any container. Wonderful keeper, can remain on the vines days after they are ripe and never spoil and always keeping that gloss and firmness. This remarkable sugar-sweet everbearer will be the leader in the future. The berry is bright red clear through, with no green tips. It is the best flavored berry grown, being very firm, large in size, and of excellent quality. Wayzata will bear 3 large crops of fruit in 18 months. It will start to bear 90 days after being planted, and will continue until heavy frost in fall. Perfect flowering. Prices on page 8.



Wayzata

### WAYZATA CLUMPS

We have a supply of these clumps that are extra large and will produce a very large crop of berries about 60 days after planting. While they last, 2 for 30c; 5 for 50c; 12 for \$1.00; 25 for \$1.75; 100 for \$5.00.

# GIANT BLUEBERRIES

Not only does the blueberry produce big juicy berries 2 to 3 times as large as common blueberries, but it is ornamental on the lawn or in the shrubbery border and very easy to grow. The foliage is dark green, long and narrow, blossoms bell-shaped and pinkish white. During the autumn the leaves turn bronze, and during the winter months the twigs are red. The bushes will grow to the height of 8 feet.

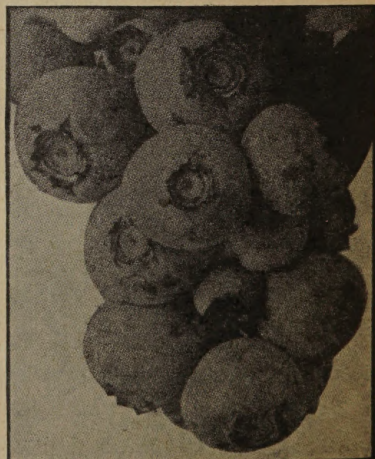
For best results plant on acid soil. Low muck or sand soils are usually very acid. If your soil does not contain acid add a little peat moss for acidity when planting. Plant two or more plants to insure proper pollenization, about 7 feet apart. If your soil is not acidic, mix the soil with old sawdust or soil from the bottom of an old wood pile. However, the very best thing to use is our SODUS ACID HUMUS, which is a sour fertilizer used for blueberries or evergreens. When using the SODUS ACID HUMUS dig the hole about 6 inches deeper than is required and fill the bottom with HUMUS mixed with regular soil. Set the plant and fill the hole with the same mixture and keep the soil moist. Write the U. S. Department of Agriculture, Washington, D. C., for Bulletin on Cultivated Blueberries. Its FREE.

- ADAMS** (early)—Large fruit, good distant shipper.
- PIONEER** (early-midseason)—Large, firm quality fruit.
- RUBEL** (midseason)—Large firm fruit, excellent shipper.
- LANCOCAS** (midseason)—Large firm, best shipper and quality.
- JERSEY** (midseason to late)—Large firm fruit, good quality.
- HARDING** (late)—Dark blue, of excellent quality.

Number of Plants	2	5	10
1 yr. old plants .....	\$0.60	\$1.40	\$2.65
2 yr. heavy rooted .....	1.00	2.25	4.25
4 yr. bearing age .....	2.00	4.75	9.00

For larger amounts ask for special prices.

For your protection, we ship each plant with a small ball of acidic soil free.

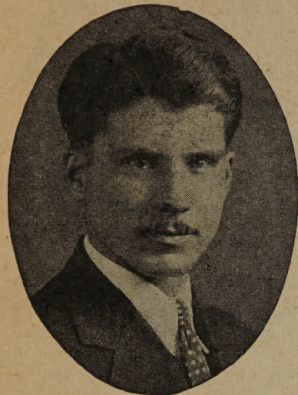


Giant Blueberries



# The Zilke Guarantee of Satisfaction

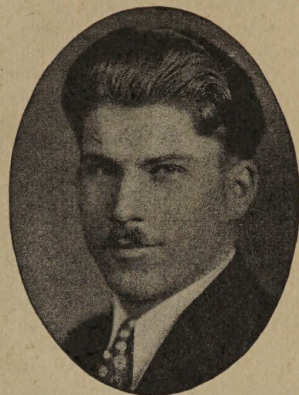
We positively guarantee all plants and seeds sold by us to be State Inspected and apparently free from disease and insect pests. We also guarantee them true-to-name, and will replace, free of charge, any that may prove otherwise through possible error.



Rudolph H. Zilke, Jr.

We guarantee all plants, trees, shrubs, bulbs and seeds to reach you in good growing condition or will replace free of charge any stock that arrives in poor condition, if we are notified within five days after you receive the shipment. It is mutually agreed between ourselves and the customers that we shall not be liable for more than the original purchase price.

We guarantee to replace any stock, free of charge, that does not live the first season, if you think it was the fault of the stock in any way, providing the complaint is received by us be-



Elmer H. Zilke

fore June 25th of the year planted. All that fails to live the first season, which is reported after June 25th, will be replaced at half price. It is impossible for us to consider any claims after Sept. 1st.

Dear Friend Customer:

As this is our only salesman, we again take the pleasure in coming to you with this small catalog of big nursery bargains. We again offer you the highest quality hardy northern grown stock at wholesale prices. Through these annual catalogs and your business with us we feel acquainted with you. Whether your order is for 10c or \$10.00 it will receive our personal attention and you will get a square deal.

You probably will receive a great number of catalogs this spring, listing many varieties of fruit of every description, but just remember that the Zilke Nursery is offering only the best of each class, the kinds that produce the most and best crops or fruits, that thrive and show the most natural disease resistance. Every plant, tree, shrub, bulb and seed that we offer is State inspected and free from disease.

Varieties are an important consideration in planning either your fruit garden or your ornamental planting. Some of the old varieties are still in first rank, but many must give up their places to the newer and finer kinds. We urge you to give the Wayzata strawberry, Boysenberry and the new Blueberry plants a fair trial. We feel sure you will be more than pleased with the results.

Here at the Zilke Nursery we utilize every known scientific method of selection, breeding, production and protection in shipment that will insure your getting perfect plants in perfect condition, with strong, fibrous roots for quick, sure growth.

It will be our constant study in the future, as it has been in the past, to give perfect satisfaction to our old customers as well as our new ones who entrust their order with us. Our success, we feel confident, depends wholly on the satisfaction we may be able to give our customer friends.

Yours very truly,

ZILKE BROS. NURSERY.



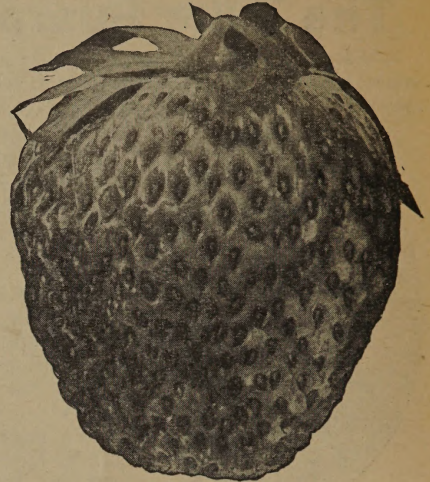
## AMBROSIA

(Late to very late)

Start bearing late and help to bridge the gap between regular varieties and everbearing. The Ambrosia is the best late strawberry that we have ever seen, it has been known that 30 berries will fill a quart box. Wonderful for long distance shipping. Ambrosia are bright red, fresh looking berries that will please you, wonderful flavor, small seeds, flesh is firm and solid. Plants grow very large and husky, often measuring 12 inches tall with very large leaves. Perfectly hardy sort, perfect flowering, we consider this a late standard sort. Prices on page 8.

## DORSETT

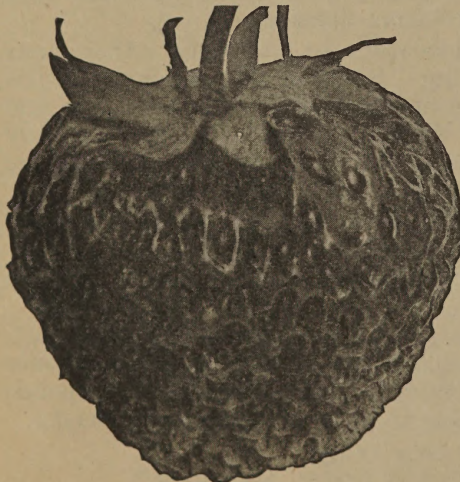
No other introduced variety except Fairfax has the fine dessert quality of Dorsett. There are some differences of opinion as to whether Dorsett or Fairfax is the best in quality, but there is little difference in opinion as to the fact that the two varieties stand head and shoulder above the general run of leading commercial sorts as far as quality is concerned. Dorsett berries average very large in size, being about as large as the Fairfax. We feel that Dorsett is firm enough so that, coupled with its other outstanding qualities it will become a leading commercial variety. Dorsett berries are rather light in color, being fully as light as Premier, and holding their light color about as well as Blakemore. This probably will be a big factor when marketing Dorsett on the wholesale markets where buyers are accustomed to considering dark color a definite sign of over-ripeness. The berries are beautiful in appearance, the light color, bright green cap, large size and attractive shape of the berries make them very desirable and should appeal to many buyers. Perfect flowering.



Ambrosia

## FAIRFAX

Fairfax is considered better in quality than Premier, even much better than any of those varieties which have been considered at the very peak in quality. We have never seen a healthier growing plant nor plants that would maintain this vigor better than these new berries, Fairfax and Dorsett. In this respect they are fully as good as Premier and Blakemore, having a dark green, almost black foliage which seems to almost radiate vigor. Fairfax berries average very large, much larger than Premier and considerably larger than Blakemore under similar conditions. Fairfax berries are very firm, they are equal or superior to Blakemore, and firmer than Premier. Fairfax berries picked at the proper time are a bright red with a green cap and prominent yellow seeds which make them very attractive. Perfect flowering.



Fairfax

## BLACK STRAWBERRY

This berry is so dark that we call it black. Wonderful sweet flavor. These almost black berries are large, nearly round, and of the finest quality. One of the finest for canning and jams because of its sweetness. We have only a few plants so please order early. 12 plants for 40c; for larger amounts see page 8.

## IMPORTANT TO YOU

Please remember that Zilke's Plants are all hand cleaned and sorted.



Premier



## PREMIER

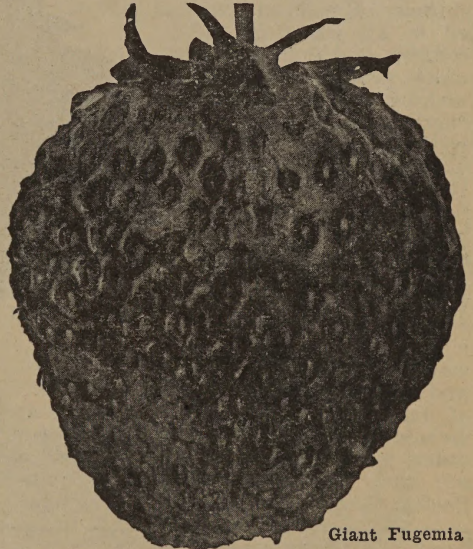
EXTRA EARLY---FROST PROOF

Premier is the greatest extra early strawberry of all times. It ripens ahead of all other varieties, the fruit is rich in color, fine in texture, excellent in flavor, and of unusual quality for shipping. Foliage is tough and healthy covering blossoms and berries and protecting them from frost and scalding sun. The plants are sturdy, and long rooted, a good drought resister. While Premier ripens early, it is very resistant to frost and matures its heavy crop of berries so that they can be marketed while prices are the highest. No other variety will give you more pleasure,

satisfaction and profit. Perfect flowering. For prices see page 8.

## GIANT FUGEMIA

Everyone who has had the opportunity to see this Giant variety produce a crop was surprised to see berries larger than they ever did before. For in size it is a monster. It has been named after the largest mountain in Japan. Produces an abundant crop of fine berries. It has been fruited in various sections and found very satisfactory. This variety has a great future. Very delicious, and wonderful in appearance.



Giant Fugemia

### 1000 PLANT SPECIAL ONLY \$2.98

We will select and label 4 good different varieties of strawberry plants, 250 of each variety, 1000 in all. We do not agree to give you any certain varieties or allow you to make the selections, we will select and label and guarantee them to be true to name. This complete strawberry garden would cost you much more elsewhere.

### SPECIAL 1000 PLANT GARDEN, Only \$2.98

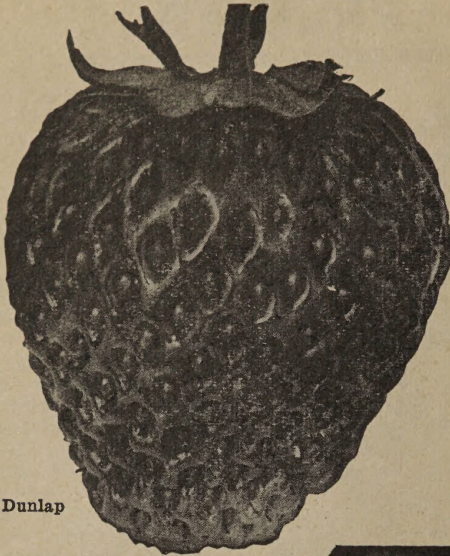
(We can not allow discounts on this offer)

### STRAWBERRY PLANTS \$1.98 PER THOUSAND

We never carry over Strawberry plants from one day to another and as many thousands of plants are dug each day during the spring, naturally there are a few plants of some varieties left over each day and these we call cut price plants. They are First Class in every way, fresh dug and guaranteed. We do not agree to give you certain variety or allow you to make selection, but we will send of the varieties found listed in this catalog and label them if possible. Order by the name of Cut Price Plants. 500 for \$1.50; 1000 for \$1.98. No discounts of any kind allowed on this offer.

Our Plants Are Guaranteed to Grow. Read Page 3.





Dunlap

### BLAKEMORE (early)

Introduced by the U. S. Department of Agriculture. Has been tested in all parts of the country and found unusually prolific in plant making and berry production. Plants extremely healthy and able to withstand dry weather. Do well on poor soils. Berries are good size, bright, even red all over, and all the way through. An extra-firm berry, which may be left on the vines several days after ripe and reaches the market looking bright and fresh. Every berry of uniform size and shape. Be sure and include a few of these plants in your order, give them a fair chance and we are sure you will not be disappointed. Perfect flowering. For prices see page 8.



Blakemore

#### COLLECTION NO. 1

50 Giant Fugemia  
50 Ambrosia

SPECIAL PRICE .....89c

#### COLLECTION NO. 2

50 Dunlap  
50 Premier  
50 Blakemore  
50 Gem (Everbearing)

SPECIAL PRICE .....98c

### DUNLAP

#### (The King of the Canners)

If you love shortcake, you will appreciate one made with Dunlap, and a can of them during the winter months is a treat. Both the canning factories and the housewife demand this variety on account of its splendid flavor and dark, rich, beautiful color. During the past two decades Dunlap has made more money for the Strawberry growers than any other variety. The plants are medium in size, long rooted, very prolific and will more than hold their own under any rough-and-tumble method of cultivation. In fact, the Dunlap is the best berry for the beginner, as it is the easiest Strawberry to grow. Bears early, and is very productive. Perfect flowering. For prices see page 8.

#### CATSKILL (mid-season)

Was introduced by the New York Experiment Station, and the only mid-season berry with outstanding merits. Extra large very firm, plump berries of the most dazzling color. Has been known to outyield Dorsett and Fairfax. Berries average about as large as Fairfax. Will hold their size well to the end of the picking season. Wonderful row maker. Thick heavy fruiting stems being held upright. Perfect flowering. Prices on page 8.



# Zilke's Certified Everbearing Strawberry Plants

Plant Zilke's **CERTIFIED EVERBEARING STRAWBERRY PLANTS** and have 3 good crops of berries in 18 months. Zilke's plants will start bearing a crop of fruit in about 60 days after planting.

## GEM, EVERBEARER

Something New in Everbearing Strawberries

The Gem berries are above the average in size. Gem has a flavor like the Progressive or Champion. Not much sugar needed when you eat Gem. Firmness is what is needed in strawberries if they are to stand shipping. Gem has this firmness. Next to Rock-hill they are the most firm strawberry we have ever grown. We fail to find any diseases on Gem. We find them to be as productive as the Progressive or Champion. They are, however, much larger in size. Perfect flowering. For prices see page 8.



Gem

### COLLECTION NO. 4

25 Wayzata                      25 Mastodon  
25 New Gem

SPECIAL PRICE .....\$1.45

### COLLECTION NO. 5

300 New Gem

SPECIAL PRICE ..... \$1.79

## MASTODON

The Marvelous Everbearing Strawberry

The large size, fine quality and delicious flavor makes this one of the marvels of nature. June berries require two summers to produce a crop of fruit, one to grow plants for a fruiting row and another to produce the crop of fruit. Mastodon begins bearing about 60 days after planting, and has ripe berries and a lot of them until freezing weather. The following spring it bears a crop almost as big as the average June varieties and after a rest of about 60 days starts right in on its third crop of fruit. Therefore, it requires no more work to produce three crops with Zilke's Select Mastodon than it does to produce one crop with other berries. Be sure and include some of these Mastodon plants in your order. Perfect Flowering. For prices see page 8.



Mastodon



## ALL STRAWBERRY PLANTS FRESH DUG AND LABELED

All of our strawberry plants are fresh dug, hand cleaned, bunched and ready for easy planting. The plants are then labeled in the field before they are gathered up by truck and hauled to our packing plant. Here they are carefully packed by experienced packers, with plenty of damp moss and other packing materials. About 95% of our plants are packed within 2 hours after they are dug. That is why we can guarantee our plants to reach you in the very best of condition.

In looking through the many catalogues you receive you will notice that some claim to be the world's largest growers of fruit plants and trees, WE DO NOT CLAIM TO BE THE WORLDS LARGEST GROWERS, BUT WE DO GROW SOME OF THE BEST THAT CAN BE GROWN.

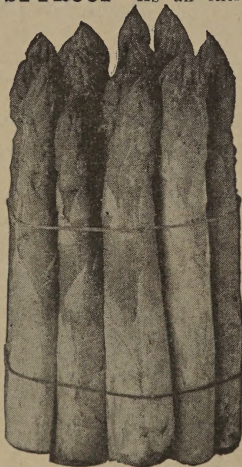
### STRAWBERRY PLANT PRICES

	25	50	100	250	500	1000
First class, Blakemore .....	\$0.20	\$0.35	\$0.50	\$1.00	\$1.75	\$2.98
First class, Dunlap .....	.20	.35	.50	1.00	1.75	2.98
First class, Dorsett .....	.25	.40	.60	1.25	2.25	3.98
First class, Fairfax .....	.25	.40	.60	1.25	2.25	3.98
First class, Premier .....	.25	.40	.60	1.25	2.25	3.88
First class, Catskill .....	.25	.40	.60	1.25	2.25	3.98
First class, Ambrosia .....	.25	.40	.60	1.25	2.25	3.98
First class, Giant Fugemia .....	.40	.60	.85	2.00	3.25	5.48
First class, Black Strawberry .....	.60	1.00	1.60	3.45		
First class, New Gem .....	.35	.55	.80	1.85	3.00	5.48
First class, Mastodon .....	.45	.70	1.10	2.15	4.00	7.48
First class, Wayzata .....	.80	1.40	2.25	4.95	8.95	17.48

**FOR LARGER AMOUNTS ASK FOR SPECIAL PRICES**

### ZILKE'S ASPARAGUS

**WASHINGTON RUST-PROOF**—As an extra early money crop nothing can compare with Asparagus. No home garden is complete without a small bed of Asparagus because it will give a bountiful and continuous supply of the finest of all early spring vegetables. On the planting of Zilke's Washington Rust-Proof Asparagus will give profitable cuttings for twenty years or longer. It is absolutely the best Asparagus ever grown. The shoots fairly jump out of the ground and they are extra big tender and juicy. Never tough or stringy. 100 roots will supply the largest of families.



#### ASPARAGUS ROOT PRICES

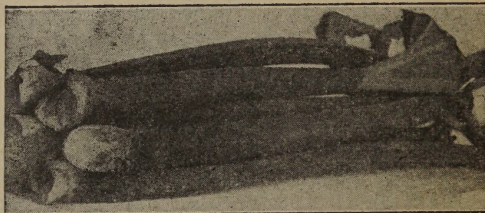
	12	25	50	100	250
1 yr. roots .....	\$0.20	\$0.30	\$0.40	\$0.60	\$1.50
2 yr. roots .....	.30	.40	.60	1.00	2.25
3 yr. roots .....	.40	.60	.90	1.50	3.35

#### COLLECTION NO. 2

25 Asparagus roots, 2 yr.  
4 Horseradish roots, 2 yr.  
4 Rhubarb roots, 2 yr.

**SPECIAL PRICE** ----- 59c

### ZILKE'S RHUBARB



**GIANT VICTORIA**—Providing the first fresh fruit for pies and dessert in the spring. A few Rhubarb plants along one side of the garden will prove a real blessing. Don't confuse the new Giant Victoria with the old 'pie plant' as this new variety really has a delicious peachy flavor. Plant it this spring and cut big, tender, pink and juicy stalks next spring. 25 roots will supply a big family the year around.

#### RHUBARB PRICES

	3	6	12	25
1 yr. Heavy .....	\$0.25	\$0.40	\$0.60	\$1.00
2 yr. Heavy .....	.35	.60	.90	1.50
3 yr. Heavy .....	.45	.75	1.25	2.25

### HORSERADISH ROOTS

Horseradish thrives everywhere and should have a place in every garden. Very valuable for appetizers, relishes, etc. Easy to grow, to can, and to sell. Bohemian roots are white, tender and free from stringiness. Plant roots with tops one inch below surface of ground.

	3	6	12	100
2 yr. Heavy Roots .....	\$0.25	\$0.40	\$0.60	\$3.00
3 yr. Jumbo Crowns ..	.35	.60	1.00	5.00



# THE NEW BOYSENBERRY

The new Boysenberry is of the Dewberry family, but much larger than Dewberries or Blackberries. These new berries often grow to a length of 2½ inches by 1 inch. It takes only from 60 to 80 Boysenberries to fill a pint box and with common blackberries it requires 150 to 200 berries. Fruit is a purplish maroon color. Plants can be trellised like grape vines. Boysenberries have been exposed to 15 degrees below zero during the past winter and were not killed, while other brambles around them were completely frozen, one grower stated. The seed are very small and very few in comparison to other berries. If the Boysenberry is permitted to remain on the vine until it is fully ripe it is much sweeter than any other vine berry. When eating fresh, no sugar is necessary because it has a very high sugar content. Heavy 1 year old plants, 5 for 40c; 12 for 75c; 25 for 1.25; 50 for \$2.00; 100 for \$3.50; 250 for \$8.00.



New Boysenberry

## TREE STRAWBERRY

Or Strawberry-Raspberry

A very unique ornament as well as a fruit-bearing plant for the garden. Each year there is a new top growth, 15 to 18 inches high, and the fruit borne in June on the same season's growth. The roots do not have to be transplanted and are good for many years. The fruit is large, cardinal-red, cone-shaped. It is the size of a strawberry. Makes delicious jelly and jams. Perfectly hardy and very productive. This is an entirely new fruit and a distinct novelty in small fruits. Have something different in your garden to show your friends. 2 plants for 25c; 5 plants for 45c; 12 plants for 89c.

Each year there is a new top growth, 15 to 18 inches high, and the fruit borne in June on the same season's growth. The roots do not have to be transplanted and are good for many years. The fruit is large, cardinal-red, cone-shaped. It is the size of a strawberry. Makes delicious jelly and jams. Perfectly hardy and very productive. This is an entirely new fruit and a distinct novelty in small fruits. Have something different in your garden to show your friends. 2 plants for 25c; 5 plants for 45c; 12 plants for 89c.



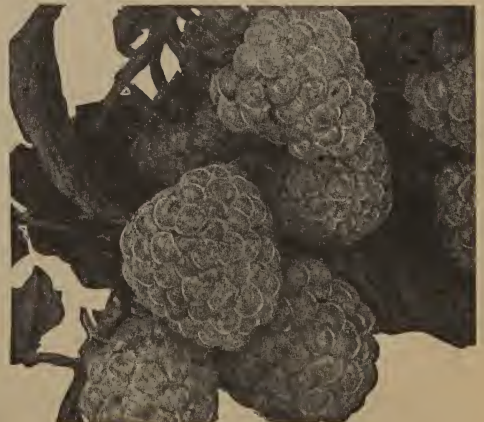
White Blackberry

## YELLOW RASPBERRY

**GOLDEN QUEEN RASPBERRY**—A large beautiful, golden yellow raspberry. Many prefer this variety to the red or black sorts, owing to its sugary sweetness and unsurpassed flavor. Quality of berries is excellent, canes hardy, prolific and thrifty in growth. Should be in every garden because of its beauty and high quality. Heavy 1 year old plants, 5 for 50c; 12 for 85c; 25 for \$1.65. 2 yr. bearing size, 18c each; 5 for 75c; 12 for \$1.50.

## TRUE WHITE BLACKBERRY

This creamy white blackberry sounds impossible, but it's true. When mixed with jet black ones it makes a most wonderful dish. Berries are larger than Eldorado, very few seeds and quite sweet when fully ripe. Strong growers and very productive of real worthwhile fruits. Heavy 1 year old plants, 5 for 50c; 12 for 85c; 25 for \$1.50. 2 yr. bearing size, 18c each; 5 for 75c; 12 for \$1.50.



Yellow Raspberry

### COLLECTION NO. 7

- 4 New Boysenberry Plants
- 4 New Yellow Raspberry
- 4 True White Blackberry
- 2 Tree Strawberry

SPECIAL PRICE .....98c



# Zilke's Certified Red Raspberries

Two rigorous inspections are made by Michigan Department of Agriculture Plant Inspectors during the growing season. That is why our plant fields are kept disease free. Then at digging and grading time they are carefully inspected for root disease and final inspection when packed.

## LATHAM

### Most Famous Red Raspberry

Although this is a comparatively new variety it is entirely past the experimental stage, and we unhesitatingly recommend Latham as one of the very best Red Raspberries ever grown. This variety originated at the Minnesota State Fruit Breeding Farm and is being grown extensively in Minnesota, the Dakotas, and Canada, and has never been known to winter-kill even though exposed to 45 degrees below zero. Latham is a tall, vigorous grower, canes extra heavy, foliage dark green, entirely free from disease.

Berries much larger than any other Red Raspberry, many of them one inch in diameter. It has been known that 70 berries have filled a pint box. Color good, quality of the best, full Raspberry flavor. Excellent for shipping or home use.

## INDIAN SUMMER

### Best Everbearing Red Raspberry

This new everbearing red raspberry will bear two crops a year. One crop in the summer the same as any other variety, and another crop in the fall on the new wood. The autumn crop starts early in September and continues until a severe frost. The berries are large, roundish conic shaped and have a beautiful color. The plants are vigorous, about medium height, and bear heavy crops. Order at least 50 plants and have a good supply of fresh raspberries all fall.



Latham

## TAYLOR

### Largest Red Raspberry

Taylor is noteworthy for its large size, bright color, attractive appearance, and excellent quality of fruit. The berries are very large, being larger than Latham and slightly smaller than Newburgh. The size holds up well throughout a long season. Color is a bright, attractive medium red that has suited most growers who have seen the fruit. The rather refined appearance of the berries, and the complete lack of crumbling add materially to their attractiveness. The thick flesh, rather small cavity, and the firmness inherited from Newman promise to make this variety a good shipper. The flavor is pleasing, sub-acid and the quality very good. Taylor ripens with Latham or a few days earlier. The plants are tall, vigorous, produce heavy crops, and multiply rapidly. The canes are sturdy and stand erect.



Indian Summer

### COLLECTION NO. 8

12 Indian Summer

12 Latham

1 yr. No. 1 plants

SPECIAL PRICE .....79c



**SODUS**

**Best Purple Raspberry**

Sodus is the most promising purple raspberry. The berries are very large, firm, medium purple in color and of a good quality. The plants are very vigorous, very productive and hardy. Sodus is very resistant to drought and yields a good crop every year. It ripens shortly after Latham. Sodus is very disease free so far.



Sodus, Purple Raspberry



Marcy, Red Raspberry

**MARCY**

**Red Raspberry**

The berries the largest of any variety in the Geneva Station collection, are long-conic, firm thick-fleshed, medium red, mild in flavor and of good quality. The plants are tall, vigorous, healthy and hardy at Geneva. The sturdy canes which should not need support, bear the fruit out in the open making it easy to harvest.

**FOR PARCEL POST RATES SEE PAGE 29**

**1-YR. NO. 1, RED, BLACK, AND PURPLE RASPBERRY PLANT PRICES**

	12	25	50	100	250	500
Latham, 1-yr. No. 1 .....	\$0.40	\$0.65	\$1.10	\$1.90	\$4.35	\$ 7.85
Taylor, 1-yr. No. 1 .....	.60	1.00	1.75	2.95	6.45	11.95
Marcy, 1-yr. No. 1 .....	.75	1.25	2.15	3.95		
Indian Summer, 1-yr. No. 1 .....	.50	.85	1.50	2.45	5.45	9.65
Cumberland, 1-yr. No. 1 .....	.40	.65	1.10	1.90	4.10	7.45
New Logan, 1-yr. No. 1 .....	.40	.70	1.25	2.05	4.45	7.95
Sodus, 1-yr. No. 1 .....	.50	.85	1.45	2.45	5.35	9.45

**1-YR. NO. 1, BLACKBERRY AND YOUNGBERRY PLANT PRICES**

	12	25	50	100	250	500
Eldorado, 1-yr. No. 1 .....	\$0.40	\$0.60	\$1.00	\$1.65	\$3.75	\$6.95
Alfred, 1-yr. No. 1 .....	.40	.70	1.15	1.95	4.25	7.65
Youngberry, 1-yr. No. 1 .....	.60	.90	1.45	2.35		

**2-YR. NO. 1, LARGE BEARING AGE PLANT PRICES**

	3	6	12	25	50	100
Latham, 2-yr. Transplants .....	\$0.30	\$0.45	\$0.80	\$1.25	\$2.10	\$3.45
Indian Summer, 2-yr. Transplants ..	.35	.50	.90	1.55	2.35	3.95
Cumberland, 2-yr. Transplants .....	.40	.70	1.15	1.95		
Eldorado, 2-yr. Transplants .....	.30	.45	.75	1.00	1.85	2.95
Alfred, 2-yr. Transplants .....	.30	.50	.80	1.15	2.00	3.45
Sodus, 2-yr. Transplants .....	.45	.75	1.15	1.95		

**FOR LARGER AMOUNTS ASK FOR SPECIAL PRICES**



# Zilke's Certified Black Raspberries

Zilke's Raspberries bear younger and live longer not only because of superior quality, but also because every plant is healthy. Two rigorous inspections are made by Michigan Department of Agriculture Plant Inspectors during the growing season. That is why our plant fields are kept disease free. Then at digging and grading time they are carefully inspected for root disease and final inspection when packed.

## CUMBERLAND

The Business Blackcap

This is the most popular Blackcap at the present time, because of its great size, firmness, and productiveness. The fruit is the largest of the Raspberry family, and is of such handsome appearance that it always brings the top prices on any market. Cumberland has never been known to fail to produce a big crop every year. This variety is perfectly hardy and tremendously productive, the bushes are upright, vigorous and hardy. Berries are a glossy black in color, not equaled by any other variety in quality, flavor, and appearance. Make your plantings with disease-free stock and you will harvest big crops of quality fruit for many years. The berries will not only be larger, they will have better color, quality and flavor, will not dry up or crumble and will be vastly superior for eating, canning or shipping. For prices, see page 11.



Cumberland

## NEW LOGAN

(Extra Early)

Here is a new extra early Blackcap. A full week earlier than Cumberland and a big yielder. Early berries always bring high prices, but that is only one of the reasons why you should plant the New Logan. In size, quality, flavor and productiveness it is the best early Black Raspberry we have ever tested. Logan grows fast into strong, sturdy bushes. It is highly resistant to drought and disease. Berries never crumble or become small and seedy. Prices on page 11.

## IMPORTANT

Zilke's Black Raspberry plants are all Trimmed Ready to Plant

### COLLECTION NO. 9

12 New Logan—Very early.

12 Cumberland—Mid-season.

Certified 1 yr. plants .....69c

### COLLECTION NO. 10

12 Eldorado

12 Alfreds

1 Yr. No. 1 Plants

SPECIAL PRICE .....69c

### PLANT ZILKE'S TRANSPLANTS AND SAVE ONE YEAR

This special grown, heavy rooted, fully developed stock offers you the shortest possible cut to Big Berry Profits. It is no longer necessary to wait a year or two for Raspberries and Blackberries. If you want quick results—berries and profits without unnecessary waiting and delay, plant Zilke's Guaranteed Big Yielding, Disease-Free Berry Bushes. For prices see page 11.

### COLLECTION NO. 11

12 Latham (red raspberry)

12 Indian Summer (everbearing)

12 Sodus (purple raspberry)

12 Cumberland (black raspberry)

12 Eldorado (blackberry)

All 1 yr. No. 1 plants

SPECIAL PRICE ..... \$1.79

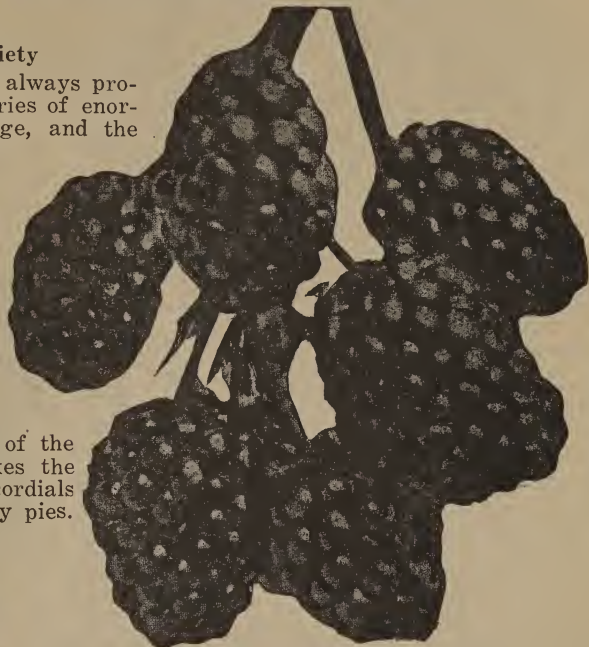


# ZILKE'S BLACKBERRIES

## ELDORADO

### Leading Commercial Variety

Eldorado never winter-kills and always produces a full crop of jet black berries of enormous size. The berries are large, and the hardest and prettiest of all blackberries, with that delicious flavor which can only be found in a wild Blackberry. This makes it very valuable for all purposes, both home and commercial, being so very firm that it will remain in good condition from four to six days and can be sent to distant markets where it always commands the highest price; being a berry that retains its rich, glossy black color until it is consumed. This berry is the choice of the canner and housewife, as it makes the best of jams, preserves, jellies, cordials and such good old time blackberry pies.



Eldorado



Alfred

## ALFRED

### Best Early

Alfred is a healthy, vigorous grower and produces nearly a full crop of fruit the year after planting. It is perfectly hardy and can be grown anywhere without winter protection. Alfred ripens a week to ten days earlier than Eldorado, producing a heavy crop of fruit. The berries are a glossy jet-black, the flavor sweet and delicious, and it is nearly seedless and coreless. The berries are larger than the average blackberry, many of them measuring  $1\frac{1}{2}$  inches in length. Prices on page 11.

## YOUNGBERRY

### Best Wine or Juice Berry

The Youngberry has achieved the greatest success ever scored by any of the berry family. Large plump berries of maroon-red, almost coreless and few seeds. Wonderful flavored flawless blend of Blackberry, Raspberry or Dewberry. Rich wine colored juice. Berries ripen earlier than Dewberries, and grow to a huge size, often 1 by  $1\frac{1}{2}$  inches and larger. For best results set plants 4 by 6 ft. and trellis them like grapes, something like 2 to 3 feet from the ground. Hardy in lower Michigan; can be mulched in colder climates. Prices on page 11.



Youngberry



# Zilke's Certified Fruit Trees

Our stock starts growing quickly after planting, because you get all of the roots, life and vigor. All our trees are grown on rich, well drained, upland soil that is specially prepared and fertilized to encourage deep, heavy, fibrous root growth. Such trees are free from root diseases. Hardy, northern grown fruit trees are recognized throughout the country as the safe and sure kind to plant. Fruit tree prices on page 17.

## SWEET CHERRIES

**SCHMIDT**—A splendid market Cherry, because of its attractive and all-around good qualities. A big producer of extra large Cherries; rich deep crimson color; tender, juicy and extra well flavored. Sweet.

**WINDSOR**—Fruit large, dull red; flesh remarkably firm, of fine quality, and a good bearer. Tree hardy, prolific. Ripens middle of July. Highly recommended by some of the most prominent fruit growers of the country.

**BLACK TARTARIAN**—Very large purplish black, heart-shaped; flesh mild and sweet, and quality considered one of the best for market and dessert. Tree vigorous, upright grower and immense bearer. Ripens in July. We recommend it as one of the best sweets.

**NAPOLEON (Royal Ann)**—Of fine appearance and very largest size. Color yellow and



Black Tartarian

amber, with bright red blush; flesh firm, juicy and delicious. Profitable for market, finding a ready sale, for canning and dessert. Ripens in July.

**BING**—This new sweet cherry originated in Oregon. Flesh very solid, flavor of the highest quality. A fine shipper; perfectly hardy and very prolific.

## SOUR CHERRIES

**MONTMORENCY**—The great pie and canning variety. Trees hardy, vigorous, immensely productive. Extra large, bright shiny red, firm and juicy. Highest quality and clings to tree long after ripe.

**EARLY RICHMOND**—Popular on account of heavy regular yields and early ripening. Fruit medium to large, bright red. Profitable market variety and fine for pies and canning.



Montmorency

### A COMPLETE ORCHARD FOR LESS THAN 25¢ PER TREE

First Class, Extra Good Rooted, 3½ to 5 feet tall

Your Choice of 1 Sweet Cherry, 1 Sour Cherry, 1 Plum, 1 Pear, 2 Apple and 2 Peach Trees. 8 Trees in all for only \_\_\_\_\_ (2 yr. old 7-16 size) \_\_\_\_\_ \$1.98

Supply the family with fresh fruit and have fruit to sell, fresh tree fruit always brings a good price on the market. Please remember these are all good healthy, husky trees.

Same Collection in the 2 yr. 9/16 in. size, 4-6 ft. Special Price \$2.45.



## CRAB APPLE

**DOLGO CRAB**—Dazzling bright red crab apple. The very best crab apple for bright red jelly and jells very easy, nothing like it. Good to eat and beautiful in appearance. Very hardy and produces heavily. Thrives anywhere. Bears very young.

## SUMMER APPLES

**RED ASTRACHAN** — Beautiful, large, deep crimson striped, best quality. Good eating and cooking, very juicy and rich flavor.

**YELLOW TRANSPARENT**—Ripens in July. One of the very best early varieties. Skin is clear white, changing to pale yellow when ripe. Flesh white, tender, subacid.

## FALL APPLES

**NEW ANOKA**—The size, color and flavor of this new apple makes it a favorite. Has good keeping qualities. The remarkable feature of this excellent apple is that it comes into bearing very young, is also dwarf in stature, so that it is well adapted to backyard planting or closer in the orchard. A very good apple.

**WEALTHY**—Ripens late summer and early autumn. Perfectly hardy, vigorous and productive. Fruit large, red streaked with white. Quality good. A profitable market sort.

## WINTER APPLES

**BALDWIN**—Large, dark red color, and of rich flavor. Excellent keeper well into the winter, a splendid shipper. Desirable for its good dessert and cooking qualities. Tree hardy, quick strong grower. Heavy cropper.

**DELICIOUS**—A remarkable introduction of recent years, which has establish-



Delicious

ed its claim to first rank, both for commercial and home orchards. Fruit large; acid. Flesh fine grained, crisp, juicy, melting, and really delicious. Tree hardy, vigorous grower, producing enormous annual yields.

**GRIMES GOLDEN**—Medium to large size; skin golden yellow, delicious sparkling flavor that cannot be described. Tree very hardy and productive. Comes into bearing very early.

**JONATHAN**—Bright, solid red. Flesh white, sometimes tinted with red; firm, fine, crisp and tender—a splendid family sort and highly profitable for market. Tree long lived, productive, and an early bearer. Will keep well without especial care, and also stand much handling.

**STAYMAN'S WINESAP** — Fruit large, bright red color. Flesh tinged with yellow; firm, crisp with pleasant, rich and acid flavor appealing to everyone.

**CORTLAND**—New. Bears very young. Fruit large, beautiful dark red striped with carmine and yellow. Flesh fine grained, crisp, juicy, white and firm. Ripens about two weeks after McIntosh.

**MCINTOSH**—Beautiful red fruit, somewhat striped. Medium in size, pure white flesh and highly flavored. Bears very young, hardy and a heavy bearer. A favorite market and eating apple.

**YELLOW DELICIOUS**—Best yellow apple. Waxy golden color. Luscious flavor, finest in the world. Bears fruit very young. Keeps until late spring without becoming mealy. Very hardy.

**TURLEY WINESAP**—An apple that succeeds everywhere. Fruit is dark red, tinged yellow, of rich enticing flavor. A fine eating apple and sells readily on the market.

## SUPERB APRICOT

Tree grows large and spreading and is immensely productive of beautiful orange colored fruit with firm flesh and excellent flavor. To assure big crops of fully matured fruit, two or more trees should be planted for perfect fertilization. Only 42c each.



Superb Apricot



**ORANGE QUINCE**

The finest, largest and most productive Quince. Tree vigorous and hardy, bears young and regularly. Fruit large, orange-shaped. Superb quality and flavor for making preserves, jellies, etc. For prices see page 17.

**PEACHES**

**SOUTH HAVEN**—The great hardy Peach for cold regions, stands 10 degrees colder weather than any other Peach grown. Large, yellow, freestone. Large as Elberta and a week earlier on the market. For Indiana markets this rules supreme. For prices see page 17.

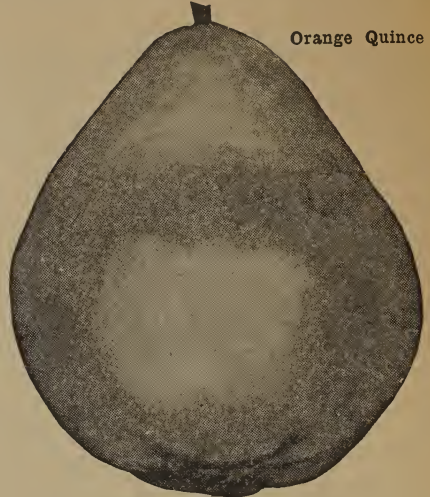
**ELBERTA**—The standard market Peach of the entire country. Very large; yellow with red blush; flesh is yellow, tender and juicy; very highly flavored. Rank, vigorous grower. Does well in Peach sections. Ripens middle September. Freestone.

**J. H. HALE**—Claimed to be one-third to one-half larger than Elberta, ripens about five days earlier, and is superior in flavor; beautiful golden yellow, with carmine blush. Freestone.

**GOLDEN JUBILEE**—The new peach now well out of the development stage and already proving the finest as well as the first yellow free stone on the market each season. It is 3 weeks ahead of Elberta. It is hardy, buds resist winter freezes. Is a reliable bearer, buds late, after late spring frosts. A typical Elberta type but richer in flavor.

**HALE-HAVEN**—Large new yellow freestone, developed by crossing the two popular varieties, J. H. Hale and South Haven. Its high color even before complete ripening, gives it great market value because of the advantage of premature picking, packing and shipping without loss. Very hardy and productive. Ready two weeks before Elberta.

Orange Quince



**HARDEE PEACH**

The HARDEE peach has very large fruit. Trees are usually in full bloom about the last week in April. The fruit ripens about Sept. 10 just a little later than Elberta. Appearance of fruit resembles that of the Elberta with its yellow skin and red cheek plus the freestone qualities. It has proven to be a good all purpose peach with fine shipping and keeping qualities. Has well resisted the dry weather we have encountered and is particularly resistant to severe cold weather. This peach is sold under license of the patent holder, plant Patent No. 120.

**PRICES FOR HARDEE PEACH TREES**

	1	10	25 or more
9-16 in. 4-6 ft. -----	\$0.55	\$5.00	\$0.38 each
7-16 in. 3-4 ft. -----	.45	4.00	.31 each
5-16 in. 2-3 ft. -----	.35	3.00	.24 each

**SURE CROP NECTARINES**

The fruit is as large as peach, but entirely fuzzless. The tree is vigorous and productive. The fruit is large, round, white and overlaid with very attractive red. The flesh is firm, tender, free from the stone, and very pleasing in flavor. Combined peach and Apricot flavor. Trees are as hardy as peach and are easy to grow. Heavy 2 yr. trees, 3½ ft. to 5 ft., 60c each; 3 for \$1.65.

**SPIRAL TREE WRAP**

Protection from rabbits, mice and insects

Experience has shown that wrapping the trunks of transplanted trees greatly reduces losses due to weather conditions. Wrapping also protects trees against damage from borers and rodents.

**SPIRAL TREE WRAP** is a creped kraft paper made up of two sheets of 30 lb. basis with a layer of asphaltum between them.

**SPIRAL TREE WRAP** is long lasting. It may be applied to trees in fall or spring after transplanting, should be removed about October 15th.

After the tree trunk has been wrapped with **SPIRAL TREE WRAP**, it is securely held in place by a criss-cross tie of binder twine.

Sold in rolls about 155 feet long, 8 inches in diameter and is 3 inches wide.

The average trunk is wrapped about 5 ft. high and the wrap is overlapped about half its width.

50c per roll, 3 rolls for \$1.35. Shipping weight 2 lbs. per roll.



Hardee Peach



**PLUMS**

**MONARCH**—Very large, roundish oval. A very handsome, rich, purple Plum that has attained popularity more quickly than any other Plum of recent introduction. Flesh golden yellow, juicy and sweet. Tree strong grower, bears young and yields abundant crops. One of the most valuable. Ripens in October.

**ITALIAN PRUNE** — Very large oval plum. Dark purple skin, golden flesh. Fine flesh, highly flavored. Wonderful for eating, canning, drying. Annual bearer. September. Freestone.

**GERMAN PRUNE**—The most delicious of all Plums. Extra large size, often two inches in diameter. Combines hardness, immense size, delicious quality, long keeping, beautiful color, small pit. An early and prolific bearer, often producing a good crop in two years after planting.



Monarch

**YELLOW EGG**—The most popular yellow plum. Very hardy, trees grow rapidly, and produce abundant crops. Fruit is medium to large, rich yellow in color. A showy market Plum, and excellent for canning.

**STANLEY PRUNE** (Bluish-Purple) — Ripens ten days earlier than any other Prune type plum. About one-third larger. Flesh greenish yellow, exceedingly sweet. Tough skin, will not crack. Hardy. Recommended by New York Experimental Station as a superior plum from all angles.

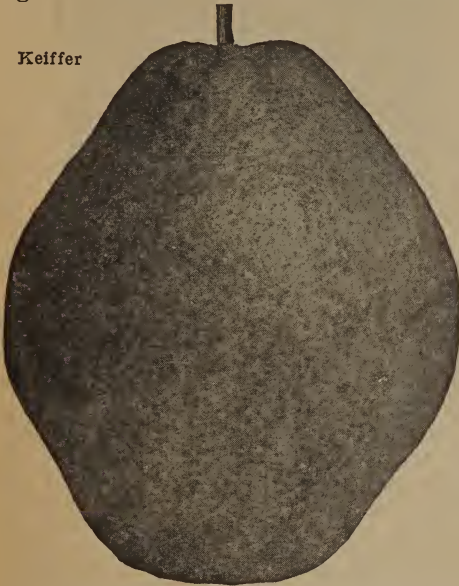
**PEARS**

**KEIFFER**—Large, rich golden yellow, tinted red. Splendid for canning. Very hardy and productive. Long keeper.

**BARTLETT** (Summer) — Golden yellow with red cheek. Excellent for dessert and canning. The best of all. Good bearer.

**CLAPP'S FAVORITE**—Tree a vigorous, upright, spreading grower, very hardy and productive. Fruit large, pale yellow flesh, fine grained, juicy, and sweet. August.

**SECKLE**—One of the richest and highest flavored Pears known; always in demand for desserts and luncheons and better known than any Pear of its kind. The tree makes a somewhat slow but stout and erect growth. September and October.



Keiffer

**FRUIT TREE PRICES**

	1	5	10	25
Apple trees, 2 yr. 7/16-9/16, 3½ to 5 ft. ....	\$0.25	\$1.15	\$2.00	\$4.50
Apple trees, 2 yr. 9/16-11/16, 4½ to 6 ft. ....	.34	1.55	2.80	6.25
Sour Cherry, 2 yr. 7/16-9/16, 3½ to 5 ft. ....	.32	1.50	2.70	5.50
Sour Cherry, 2 yr. 9/16-11/16, 4½ to 6 ft. ....	.39	1.85	3.30	7.00
Sweet Cherry, 2 yr. 7/16-9/16, 3½ to 5 ft. ....	.35	1.70	3.30	7.50
Sweet Cherry, 2 yr. 9/16-11/16, 4½ to 6 ft. ....	.44	2.10	4.00	9.00
Pear trees, 2 yr. 7/16-9/16, 3½ to 5 ft. ....	.35	1.65	3.10	7.50
Pear trees, 2 yr. 9/16-11/16, 4½ to 6 ft. ....	.44	2.05	3.80	9.00
Plum trees, 2 yr. 7/16-9/16, 3½ to 5 ft. ....	.42	2.00	3.40	7.50
Plum trees, 2 yr. 9/16-11/16, 4½ to 6 ft. ....	.48	2.35	4.50	9.75
Apricots, 2 yr. 7/16-9/16, 3½ to 5 ft. ....	.42	2.00	3.60	8.50
Apricots, 2 yr. 9/16-11/16, 4½ to 6 ft. ....	.48	2.30	4.40	9.75
Quince trees, 2 yr. 9/16-11/16, 4½ to 6 ft. ....	.49	2.35	4.40	10.50
Peach trees, 2 yr. 5/16-7/16, 2½ to 3½ ft. ....	.18	.80	1.40	3.25
Peach trees, 2 yr. 7/16-9/16, 3½ to 4½ ft. ....	.22	1.05	1.90	4.25
Peach trees, 2 yr. 9/16-11/16, 4 to 6 ft. ....	.29	1.35	2.40	5.50



# ZILKE'S CERTIFIED GRAPE VINES

Plant a vineyard and invest in something permanent. You will receive a regular yearly income from it as long as you live. Plant a vineyard of our super selected plants this spring and cash in on this opportunity for profitable fruit growing.

**CONCORD**—This is the old stand-by in the leading market vineyards garden variety. It grows on all soils, in all climates, is perfectly hardy and extremely productive. Bunches are large and compact. Berries large, bluish black, excellent for grape juice, wine, table use, canning and market.

**DELAWARE**—Beautiful light red colored berries, small in size and sweeter than any other Grape. Bunches small and compact. Flesh is juicy and spicy and of finest quality for table use, grape juice, jellies, etc.

**NIAGARA**—Most Popular White Grape—Perfectly hardy, and very productive. Bunches very large and compact. Berries fully as large or larger than Concord, mostly round, yellowish green when fully ripe. The skin is thin but tough and does not crack. Quality of the best, very little pulp, melting and pleasing to the taste. Of exceptional value for eating, grape juice or market.

**CATAWBA**—Red. The standard red Grape that has lost none of its popularity. Bunches and berries large, of a coppery red color, becoming purplish when ripe.

**MOORE'S EARLY (Black)**—Ripens 2 weeks before the Concord; large berries and bunches. Excellent for home use and market, and does not winter-kill.



Concord

## ZILKE'S SELECT GRAPE PLANT PRICES

	2	5	10	25	50	100
Concord, 1 yr. heavy	\$.12	\$.25	\$.40	\$.85	\$1.35	\$2.35
Concord, 2 yr. heavy	.20	.40	.65	1.25	2.10	3.25
Niagara, 1 yr. heavy	.18	.35	.60	1.15	1.95	3.35
Niagara, 2 yr. heavy	.24	.50	.85	1.75	2.50	4.50
Catawba, 1 yr. heavy	.22	.45	.75	1.50		
Catawba, 2 yr. heavy	.30	.60	1.00	2.25		
Delaware, 1 yr. heavy	.22	.45	.75	1.50		
Delaware, 2 yr. heavy	.30	.60	1.00	2.25		
Fredonia, 2 yr. heavy	.40	.80	1.25	2.75		
Portland, 1 yr. heavy	.40	.80	1.25			
Moores Early, 1 yr. heavy	.22	.45	.80	1.60	2.35	3.75
Moores Early, 2 yr. heavy	.32	.65	1.10	2.25	3.50	6.00

## GRAPE ARBOR

- 4 Concord, blue
- 2 Niagara, white
- 1 Moores Early, black
- 1 Catawba, red
- 1 Fredonia, black
- 1 yr. heavy plants 60c
- 2 yr. select plants \$1.00

## BEST OF THE NEWEST IN GRAPES

**FREDONIA (Black)**—Promises to be the earliest good black grape. Vine is vigorous, hardy and productive and ripens its fruit about two weeks earlier than Worden. Clusters are medium size and compact; the berries are large and hang persistently; flesh is firm although quite tender and quality very good.

**PORTLAND (White)**—The earliest of all grapes. Large bunches and berry; flesh sweet, juicy and of fine flavor. Valuable early grape for home gardens, and bids fair to hold first place as an early market variety. The vine of Portland is particularly satisfactory as it is vigorous, productive, hardy and healthy.

To those wanting quick results we can furnish Concord and Niagara in extra large, well branched, heavy 3 year plants, 20c each; 6 for \$1.00; 18 for \$2.50.

# Zilke's Shade and Ornamental Trees

**WISCONSIN WEEPING WILLOW**—Long fine leaves borne on sweeping branches, that reach to the ground when trees are a few years old. Trees grow to a great height and become very picturesque. Grow rapidly. 5 ft. to 6 ft. 60c each; 2 for \$1.00; 5 for \$2.00.

**CUT LEAF WEEPING BIRCH**—Beautiful white bark, long pendulous branches with fine, deep cut green leaves. 5 to 6½ ft., \$1.45 each; 2 for \$2.65; 6 to 7 ft., \$1.95 each; 2 for \$3.65; 7½ to 9 ft., \$2.65 each; 2 for \$5.00.

**LOMBARDY POPLAR**—Leaves are dark glossy green with silvery surface beneath. Wonderful for a background. Grows tall, slender.

LOMBARDY POPLAR PRICES	1	3	10	100
2 to 3 ft. -----	\$0.15	\$0.40	\$1.00	\$6.50
4 to 5 ft. -----	.22	.55	1.50	9.98
6 to 8 ft. -----	.42	.90	2.35	
8½ to 10 ft. -----	.52	1.25	3.25	

**SILVER MAPLE**—Probably the best of all Maples for quick and good shape. Leaves of silvery green color. Strong 2½ to 3 ft. 15c each; 3 for 40c; 10 for \$1.15; 3 to 4 ft. 25c each; 3 for 60c; 10 for \$1.85; 5 to 6 ft. 35c each; 3 for 90c; 10 for \$2.75; 6 to 8 ft. 55c each; 3 for \$1.50; 10 for \$3.85.

**TULIP TREE**—One of the grandest of our native trees; of tall pyramidal habit, with tulip like flowers. Yellow flowers, orange inside base. 5-6 ft., 50c each; 3 for \$1.25.

**RUSSIAN MULBERRY**—Used for quick windbreak around fruit orchards, as it is a rapid grower and thrives almost anywhere. Will keep birds away from other valuable fruits. 5 to 7 ft. 50c each; 3 for \$1.35.

**PURPLE FRINGE (Smoke Tree)**—A shrub or small tree of spreading habit, covered in mid-summer with a profusion of dusky hair-like flowers that give it the appearance of mist or smoke. Foliage changes to a brilliant red and yellow in autumn. Good as a single specimen on the lawn or to mass with tall shrubs. 2½ to 3 ft., 50c each; 2 for 90c.

**MOUNTAIN ASH**—One of the most ornamental of all trees. Fine foliage which turns a brilliant orange-red in fall. Clusters of flashy orange-colored fruits brighten the fall landscape and often remain all through the winter. Big 4½ to 5 feet trees only \$1.00 each.

**PINK FLOWERING DOGWOOD**—A low spreading tree that grows to about 20 feet. The large red pink flowers which come before the leaves appear in the spring, present a vision of loveliness against the new green of an early spring lawn. Foliage is a deep green turning to rich bronzy red in autumn. Ideal as a specimen plant or fine for group plantings. 2 ft. trees \$1.00 each.



Weeping Birch

**CHINESE ELM**—Most popular shade tree grown. Thrives on all soils and grows rapidly. Forms a well-shaped rounding head, with many branches and abundant foliage. Ideal for street and lawn plantings. Roots do not clog drains.

**THESE TREES ARE ALL 3 YEARS HEAVY**

	1	3	10
4½ to 5½ ft. -----	\$0.39	\$1.00	\$2.45
5½ to 6½ ft. -----	.49	1.25	3.45
7½ to 9 ft. -----	.69	1.95	4.98

These trees are all good, large, and strong.

**HOPA FLOWERING CRAB** — One of the most desirable varieties. An attractive upright growing tree that becomes literally covered with large, rose colored flowers. Very hardy and free from diseases. One of the best. 2½ to 3½ ft. size, 49c each; 2 for 88c; 4 to 5 ft. size, 79c each; 2 for \$1.49.

**REDBUD**—Handsome, low-growing, flat-topped tree. Grows to about 15 ft. in height. Wide-spreading branches covered with rosy lavender blooms before the leaves appear in spring. Flowers are so thick the tree appears as a small pink cloud. Due to the extreme hardness of the wood, the tree is usually very late in leafing out. 3 to 4 ft. trees, 50c each.

**PURPLE LEAF PLUM**—An unusually attractive little tree with brilliant purple foliage all season. Grows naturally as a tall shrub but can be pruned into a low-growing small tree. Valuable for its color contrast in the green background of other shrubs. Heavy rooted 3 to 4 ft. trees, 59c each.

**ROSE TREE OF CHINA**—In early spring this beautiful shrub is completely covered with dainty, double, pink flowers resembling small roses. Grows to about 5 ft and succeeds everywhere. Nice big 2 to 3 ft. trees 59c each.

**JAPANESE FLOWERING CHERRY**—One of the best low growing trees, covered with exquisite beautiful double, rose-pink flowers, one of the loveliest of all the flowering trees. Nice big 2 to 3 ft. trees, \$1.00 each.

**NORWAY MAPLE**—An exceptionally fine tree for lawn and street planting. Forms a perfect rounded head, with large, deep green foliage, very hardy, easily transplanted, changes to a pretty pale yellow in the fall. 6 to 7 ft. trees, \$1.25 each.



Chinese Elm



# Ornamental and Flowering Shrubs

All of our Shrubs are blooming size, ready for immediate effect. The shrubs we have listed here have been carefully selected, hardy, 2 yr. old stock, well branched.

**MOCK ORANGE**—Beautiful shrub. Creamy white flowers in clusters. Strong grower.

**FORSYTHIA** (Golden Bell) — Early blooming. Masses of yellow flowers before foliage appears.

**DEUTZIA** (Pride of Rochester)—Well shaped shrub, with large double white flowers.

**WEIGELA ROSEA**—Lovely foliage. Profusion of showy rose-colored flowers in June.

**FEATHERY TAMARIX**—Graceful, slender branches with fine, feathery foliage. Tiny pink flowers appear on ends of branches in April.

**HYDRANGEA A. G.**—Large, flat, white blooms in June remain until autumn. Medium height shrub, does well in shade or sun.

**SPIREA ANTHONY WATERER**—Dwarf variety. Large heads of magenta pink flowers.

**ALTHEA, ROSE OF SHARON**—Masses of large double flowers in mid-summer and fall. Red, white, purple and pink. State color wanted.

**FLOWERING ALMOND**—Small shrub with upright branches covered entire length with double pink flowers that resemble Roses. Blooms before leaves open in May. Often called May Rose.

**RED TARTARIAN HONEYSUCKLE**—Its grayish white wood is beautiful all season. Has thick heavy foliage. Blossoms in May followed by red berries for the winter. One of the best shrubs.

**PRICES FOR ABOVE SHRUBS**

	1	3	10
1 yr. 12-18 in. -----	\$0.22	\$0.59	\$1.85
2 yr. 18-24 in. -----	.34	.89	2.75

**WHITE SNOWBERRY**—Medium height shrub having small, pink flowers in spring which are followed by large clusters of white berries, remaining all winter. Leaves remain late into fall.

**WEIGELA, Eva Rathke**—Dark, velvety red trumpet shaped flowers, clusters on branches. June until August. Graceful arching branches.

**HYDRANGEA P. G.**—Handsome shrub. Large heads of white flowers, changing to pink. Blooming from mid-summer till fall.

**SNOWBALL**—Old fashioned shrub, well known. Its balls of pure white cover the bush in May. Wonderful shrub for single plantings.

**BUDDLEIA** (Butterfly Bush)—Purple flowers in August and September. Very showy.

**BEAUTY BUSH**—Clear pink, bell-shaped flowers with quaint brown marks in throats. Buds encased in fuzzy pods which remain when flowers fall. Delicate foliage tinted bronze. Hardy, medium size bush.

**PRICES FOR ABOVE SHRUBS**

	1	3	10
1 yr. 12-18 inch -----	\$0.29	\$0.69	\$2.15
2 yr. 18-24 inch -----	.39	1.00	3.15

**SPIREA VAN HOUTTI**—Very attractive for ornamental hedges or artistic groupings. Graceful, arching branches, a mass of white when in bloom. Most popular of all. Very hardy. 2 yr. heavy rooted and well branched. 15 to 18 inch 10c each; 5 for 40c; 10 for 70c; 25 for \$1.50; 18 to 24 inch 15c each; 5 for 60c; 10 for \$1.00; 25 for \$2.25; 3 yr. 2 to 3 ft. clump plants, 25c each; 5 for \$1.00; 10 for \$1.75.

**JAPANESE BARBERRY**—Perfectly hardy. Rust proof. Bright green foliage turning to a dazzling red in autumn, followed by red berries. Very beautiful. Grows in all soils. May be pruned, or makes a beautiful hedge not trimmed. Also fine for specimen bushes or border. 2 yr. 10-18



inch heavy, 10c each; 5 for 40c; 10 for 65c; 25 for \$1.45. 4 yr. heavy, 18-24 in., 18c each; 5 for 80c; 10 for \$1.50.

**NEW RED LEAF BARBERRY**—This variety starts its very first foliage a warm bronzy-red, becoming more brilliant with the summer heat. Abundance of scarlet berries throughout winter. 2 yr. heavy, 12-18 inch, 25c each; 5 for 85c; 10 for \$1.50; 25 for \$3.25.

## FRENCH LILACS

Valuable, hardy improved lilacs. Popular on account of attractive flowers of various colors and foliage. Grows from 10 to 15 feet tall. 2 year heavy 40c each; 3 for \$1.10.

**ALPHONSE LAVALLE**—Bluish-lilac flowers.

**HUGO KOSTER**—Lilac tinged red.

**LUDWIG SPAETH**—Purple.

**JAN VON TOL**—Pure white flowers.

**CONGO**—Dark wine-red flowers.

## TREE HYDRANGEA P. G.

Handsome small Hydrangea trees. Blooms from July to September the first season. Star attraction in any landscape. Will bloom this summer. Starts with a white bloom which turns to pink in the fall. 2 yr. 2½ to 3 ft. trees, 85c each.

# HARDY HEDGES

**AMOOR RIVET PRIVET**—This is the hardiest of all hedges, and one of the most beautiful. Foliage dark glossy green. Leaves stay on long into the winter. Fine white flowers with berries later on. Set about 12 inches apart. 12 to 18 inch, 5 for 40c; 10 for 60c; 25 for \$1.00; 100 for \$2.95; 18-24 inch, 5 for 50c; 10 for 80c; 25 for \$1.50; 100 for \$4.45.

**CHINESE ELM**—It can be kept trimmed to a medium height or grown as a taller screen. The more you trim it, the more dense and compact it gets. Grows so rapidly that it will make a hedge in just a few months. Perfectly hardy and planted in every state. Hardy, Beautiful, Fast Growing and priced very low. As it becomes known, it will be planted for hedging by the millions. The plants we offer are well-branched, especially selected for hedge planting. 12-18 inch, 10 for 40c; 25 for 70c; 100 for \$1.95; 18-24 inch, 10 for 50c; 25 for \$1.00; 100 for \$2.45, 2-3 ft. trees, 10 for 70c; 25 for \$1.50; 100 for \$4.45.

### EXTRA LARGE SHRUBS

- Feathery Tamarix
- Forsythia, Golden Bell
- Mock Orange
- Deutzia

3 years old, 2½ to 4 ft.

Your Choice, 3 for ----- \$1.50

# ZILKE'S HARDY ROSES

Hardy Northern, Field Grown, 2 Yr. Heavy Roses.

## BUSH ROSES

Bush Roses 37c each, 3 for \$1.00, 7 for \$1.98

**E. G. HILL** Everblooming—Large, scarlet, shading deeper as they develop.

**PRESIDENT HERBERT HOOVER** Everblooming—Glorious cerise toned yellow, orange and scarlet.

**JOANNA HILL** Everblooming—Beautiful, distinctive shaped buds and blooms of light yellow, with bronze shadings in center.

**GIpsy LASS** Everblooming—Well-shaped double blooms of dark glowing scarlet crimson.

**FRAU KARL DRUSCHKI**—Very popular large pure white.

**VATERLAND**—Dark red, with coppery reflexes. Large double.

**ROMANCE**—Yellow splashed scarlet and carmine.

**AMI QUINARD** Everblooming—Dark velvety crimson, almost black; fragrant.

**LOS ANGELES** Everblooming—Flame-pink toned coral and gold at base.

**TALISMAN**—Golden yellow, stained coppery-red and orange-rose.

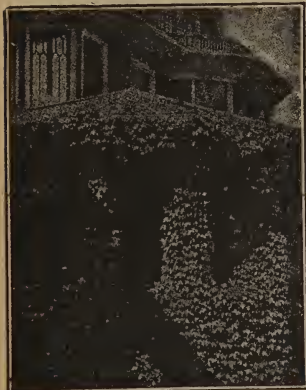
**AUTUMN** Everblooming—Burnt-orange and yellow, splashed with red, on very long, strong stems; blooms profusely.

**AMERICAN BEAUTY**—A very popular cerise-red variety.

**GRUSS AN TEPLITZ** Everblooming—Brilliant deep red with velvety crimson sheen.

**RED RADIANCE** Everblooming—Bright rosy-red form of Radiance.

**PINK RADIANCE** Everblooming—All-around garden rose of brilliant rose-pink.



Boston Ivy

## CLIMBING ROSES

**PAUL'S SCARLET CLIMBER**—Large, brilliant scarlet color, last well.

**SILVER MOON**—Large buds, creamy white flowers, semi-double small sprays.

**BLUE RAMBLER**—Semi-double purple rose, turning to steel blue with white and dark rose shadings.

**PRIMROSE**—New hardy yellow climber with large, very double canary-yellow flowers in great profusion.

**DR. VAN FLEET**—Pale pink buds and flowers.

**SEVEN SISTERS**—Red to blush-pink.

ABOVE VARIETIES. 32c EACH, 3 FOR 89c.

## SPECIAL—SPECIAL

We have a large number of climbing roses that have lost their labels while digging and grading and we are going to give you these unnamed roses at "give away prices". These roses are all good healthy 2 yr. old plants.

WHILE THEY LAST, 3 FOR 49c

# ZILKE'S CLIMBING VINES

All of the Climbing Vines We Offer Are Heavy 2 Year Old.

**CLEMATIS PANICULATA**—Rapid grower. Beautiful glossy green foliage with masses of fragrant white flowers. 2 yr. strong plants, 32c each; 3 for 89c.

**BOSTON IVY**—One of the finest hardy climbers for covering walls, verandas and trunks of trees, as it clings firmly to the smoothest surface. Color is deep green in summer, crimson and scarlet in autumn. 2 yr. strong plants, 32c each; 3 for 89c.

**AMERICAN BITTERSWEET**—Native climber, handsome glossy foliage with large clusters of beautiful orange-crimson fruits, retained all winter. Very much in demand in decorating. 2 yr. strong plants, 32c each; 3 for 89c.

**TRUMPET VINE**—A robust, woody fern-leaf vine, twining tightly with numerous roots along its stems. Large trumpet-shaped orange scarlet flowers cluster at the tips. 2 yr. strong plants, 32c each; 3 for 89c.

**HALL'S JAPAN HONEYSUCKLE**—Its fragrant white and yellow flowers are produced freely almost all summer and the leaves remain green almost all winter. Grows vigorously in sun or partial shade. Fine for porch, fence, and covering. 2 yr. strong plants, 32c each; 3 for 89c.

**DUTCHMAN'S PIPE**—Immense heart-shaped leaves, sometimes 12 inches across, supplying the densest kind of shade. Rapid grower, hardy and does well in sun or shade. Curious, pipe-shaped, yellowish brown flowers. 2 yr. strong plants, 50c each; 3 for \$1.35.

**SILVER LACE VINE**—A beautiful quick growing vine, with rich glossy green foliage, and a mass of feathery white bloom in late summer and fall. 2 yr. strong plants, 32c each; 3 for 89c.

**PURPLE WISTERIA**—Graceful foliage. Drooping clusters of blue flowers. Very hardy, rapid growing vine. 2 yr. strong plants, 32c each; 3 for 89c.

**CLEMATIS JACKMANI**—Its flowers are from 4 to 6 inches in diameter; intense violet-purple with a rich velvety appearance. Flowers continually from July until cut off by frost. 2 yr. strong plants, 50c each; 3 for \$1.35.

**GOLD FLAME HONEYSUCKLE**—Immense, showy clusters of trumpet-shaped buds and fragrant blooms. Outside of petals brilliant flame-pink, while the inside is a creamy golden yellow. Dark glossy foliage. Blooms freely from early spring until cut down by heavy frost. 2 yr. strong plants, 50c each; 3 for \$1.35.

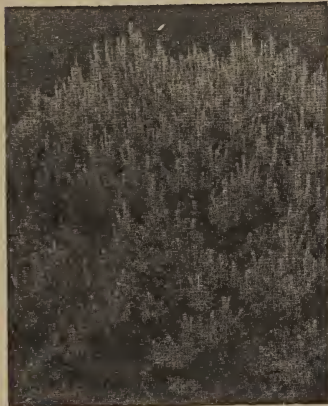


# ZILKE'S SELECT EVERGREENS

**IRISH JUNIPER**—An evergreen of slender columnar habit glaucous green foliage. Beautiful in pairs for doorways, gates, walk corners, etc. 6-8 inch seedlings, 20c each; 3 for 55c; 10 for \$1.65; 8-12 inch transplants, 35c each; 3 for 95c; 10 for \$2.85.

**SAVIN JUNIPER**—Fine, moss-green foliage. Low type with branches spreading out and upward. 4 to 6 inch seedlings, 20c each; 3 for 55c; 10 for \$1.65; 6 to 10 inch spread transplants, 35c each; 3 for 95c; 10 for \$2.85.

**CREeping JUNIPER**—A creeping type that is very valuable for planting in areas where height is a controlling factor. Foliage is a good shade to blend well with other plantings. 4 to 6 inch seedlings, 20c each; 3 for 55c; 10 for \$1.65; 6 to 10 inch spread transplants, 35c each; 3 for 95c; 10 for \$2.85.



Mugho Pine

3 for 40c; 10 for \$1.00; 100 for \$6.50; 9 to 12 inch transplants, 20c each; 3 for 50c; 10 for \$1.25; 100 for \$8.50.

**AUSTIN PINE**—Remarkably robust, spreading, leaves long, stiff and dark green. Hardy. Used extensively in cities as it is not affected by coal and gas smoke. 6 to 12 inch seedlings, 15c each; 3 for 40c; 10 for \$1.00; 8 to 12 inch transplants 35c each; 3 for 95c; 10 for \$2.85.

**SCOTCH PINE**—Foliage light green with bluish cast, reddish-brown branches form a rounded head, will thrive in almost all soils. Very hardy. 6 to 10 inch seedlings, 15c each; 3 for 40c; 10 for \$1.00; 8 to 12 inch transplants, 35c each; 3 for 95c; 10 for \$2.85.

**MUGHO PINE**—Valuable for all low group plantings. Dwarf in habit, forming a low dome-shaped mound. Color a dark green except in early

spring when the tender new growth of light green gives it a two-color effect. 6 to 8 inch seedlings, 20c each; 3 for 55c; 10 for \$1.65; 6 to 10 inch transplants, 30c each; 3 for 75c; 10 for \$2.15.

**AMERICAN ARBOR VITAE**—A beautiful tree, thrives in damp moist locations, especially desirable for screen and hedges. 4 to 6 inch seedlings, 12c each; 3 for 35c; 10 for 85c; 9 to 11 inch transplants, 35c each; 3 for 95c; 10 for \$2.85.

**PYRAMID ARBOR VITAE**—A dense, compact type of good green color, narrow and pyramidal in habit. 6 to 8 inch seedlings, 25c each; 3 for 65c; 10 for \$1.95; 8 to 12 inch transplants, 35c each; 3 for 95c; 10 for \$2.85.

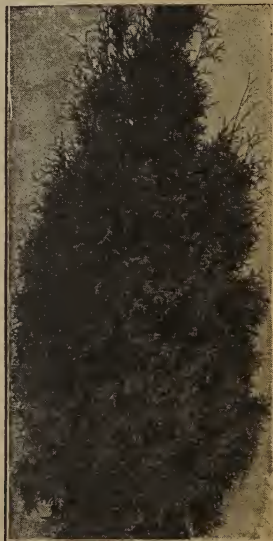
**GLOBE ARBOR VITAE**—Naturally globe-shape, light green foliage. 6 to 8 inch seedlings, 25c each; 3 for 65c; 10 for \$1.90; 8 to 10 inch transplants, 35c each; 3 for 95c; 10 for \$2.85.

**UPRIGHT JAPANESE YEW**—Beautiful dark green foliage. May be sheared for a low hedge allowed to throw out its graceful wands for informal corner plantings, or kept trimmed back into compact shape. Many red berries form and hang close to the branches all winter. 5 to 7 inch seedlings, 20c each; 3 for 55c; 10 for \$1.65; 6 to 10 inch transplants, 35c each; 3 for 95c; 10 for \$2.85.

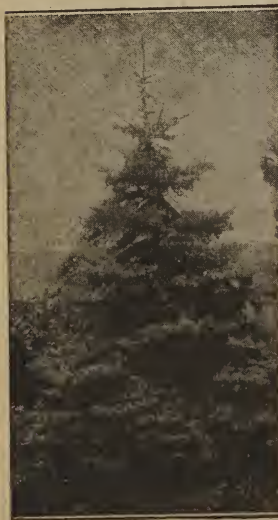
**SPREADING JAPANESE YEW**—Foliage and description same as the Upright Japanese Yew except this variety grows lower and broader. 6 to 8 inch seedlings, 25c each; 3 for 60c; 10 for \$1.95; 6 to 10 inch transplants, 35c each; 3 for 95c; 10 for \$2.85.



Irish Juniper



American Arbor Vitae



Norway Spruce

# ZILKE'S HARDY PERENNIALS

Plant some of Zilke's Hardy Perennial plants this spring and assure yourself of lovely flowers for many years to come. WE PAY THE POSTAGE ON EVERY THING LISTED ON THIS PAGE. PLEASE KEEP THIS IN MIND WHEN COMPARING PRICES.

## HOLLYHOCKS

Large full double flowering type. Much improved from the older types, both in size and texture. Grows from 4 to 6 feet in height. Your choice of Red, Pink, White and Yellow. 20c each; 3 for 55c; 6 for \$1.00 Postpaid.

## NEW HARDY DWARF ASTERS



Asters

These new asters were imported from England just recently. We have selected the best of the group of Dwarf Asters to offer to our customers, at a very low price.

**COUNTRESS OF DUDLEY**—Lovely blooms of luminous pink, with bright yellow eye. September. 9 inch.

**LILAC TIME**—Deep violet blue flowers are produced on well rounded bushy plants. September. 15 inch.

**NANCY**—Flesh-pink flowers cover this dwarf bushy plant. September. 12 inch.

**SNOW FAIRY**—Semi-double white flowers cover this graceful plant. September. 12 inch.

ABOVE ASTER PLANTS 25c each; 3 for 70c.

## NEW HARDY GIANT ASTERS

**BLUE GEM**—Large lovely flowers of blue with a yellow center. Double flowers. Best blue in cultivation. September until frost. 3 to 4 ft.

**RED ROVER**—The first red fall aster. Deep rosy red flowers with golden center, buds bright red. Many flowers. 3 to 4 ft.

**ROYAL BLUE**—Large attractive rich blue shade. Very effective from late August on. Splendid for cutting. 2½ to 3 ft.

ABOVE 3 ASTERS ARE 20c EACH; 3 FOR 55c

## HARDY CUSHION CHRYSANTHEMUMS

**BRONZE CUSHION**—Rich red bronze, turning to a bronzy yellow with a light red center.

**KING CUSHION**—Pure fiery red. Multitude of beautiful 2 to 2½ in. flowers. One of the very best.

**PINK CUSHION**—Flowers open to a deep orchid pink then change to a light orchid with a creamy center finally salmon pink with a soft yellow center. Has a record of 3000 flowers the first year. Very hardy.

**QUEEN CUSHION**—Snow white flowers with a faint yellow center. Wonderful for color effects.

ABOVE CUSHION CHRYSANTHEMUMS, 25c each; 3 for 70c.

## HIBISCUS

**GIANT MALLOW MARVELS**—A new strain which produces very large flowers in Aug. and Sept. Very easy to grow. Your choice of Pink, Red or White. 20c each; 3 for 50c, Postpaid.

## YUCCA

Its broad, sword-like foliage and tall, branched spikes of large, fragrant, drooping, creamy white flowers make it an effective plant for all positions. The foliage stays green the year around, bringing it in the class of "evergreen plants." 20c each, 3 for 50c, postpaid.

## HARDY IRIS

Named Iris, 3 for 20c; 8 for 50c; 17 for \$1.00 Postpaid.

**AFTERGLOW**—Soft pink, shading yellow.

**CAPRICE**—Large, deep rosy red.

**JUNIATA**—Late, clear blue.

**LOHENGRIN**—Catalpa-rose.

**MME. CHEREAU**—Pure white, lavender edge.

**QUAKER LADY**—Lavender and yellow.

**RHINE NIXE**—White with blue.

**SHERWIN WRIGHT**—Golden yellow.

### SPECIAL PRICE

30 mixed Iris Roots, at least 8 varieties

**\$1.00 POSTPAID**

## BLEEDING HEART

Its fern-like foliage and deep rosy red, heart-shaped flowers clustered along drooping stems give character to any perennial garden. Very hardy but it prefers a somewhat shady place. 20c each, 3 for 50c, postpaid.

## DELPHINIUM

True aristocrats and essential in every garden. Commonly known as Larkspur. Tall, graceful spikes of clear blue flowers give distinction to any planting. Free bloomers almost throughout the summer and excellent for bouquets. We can furnish either Belladonna (light sky-blue), or Bellamosa (dark, rich blue). 20c each, 3 for 50c.

## SELECTED PEONIES

Plant them in Spring or Fall in a well worked soil in a fully sunny location. Crowns should be 3 inches below the surface. Too deep planting is a frequent cause of shy flowering. Avoid wet soggy soil. 30c each; 3 for 75c, postpaid.

**DUKE OF CLARENCE**—Pink.

**FESTIVA MAXIMA**—White.

**FELIX CROUSSE**—Red.

**GOLDEN HARVEST**—Salmon.

**KARL ROSENFELD**—Red.

## CHINESE LANTERN

A hardy perennial, very much in demand because of its

wealth of bright orange - scarlet, lantern-like fruits in autumn, which are so fine for winter bouquets. Cut and dried they last all winter. Will grow in any good soil, and in sun or partial shade. 20c each. 3 for 50c, postpaid.



## RED HOT POKER

Brilliant scarlet, lower petals rimmed with orange. Blooms July to August. Rushlike foliage with thick flower stalks a yard long, a single fiery cone at top. 20c each, 3 for 50c, postpaid.

Red Hot Poker



# GLADIOLI BULBS

Large Blooming Size Bulbs, 7c each; 3 for 18c; 6 for 30c; 12 for 50c; 30 for \$1.00, Postpaid.

Blooming Size Bulbs, 3 for 12c; 6 for 20c; 12 for 35c; 18 for 50c; 50 for \$1.35, Postpaid.

**MAMMOTH WHITE**—One of the best whites; many spikes open at once, very large.

**GOLDEN EAGLE**—Of the best early yellows.

**GOLDEN DREAM**—One of the best late yellows.

**BETTY NUTHALL**—Coral-pink, large and tall; late. Splendid for cutting.

**MINUTE**—A model for size and shape. Ranking high. Very best clear, light lavender. Late.

**BERTY SNOW**—Mid-season. Lavender.

**LOS ANGELES**—Immense spikes bearing huge blossoms of shrimp pink with a throat of orange tinted with carmine. Sends up new spikes after the old are cut.

**AVE MARIA**—Many, large, well placed flowers of light blue with a purple blotch. Best of blues.

**BAGDAD**—A magnificent smoky old rose, darker at margins, lighter in throat.

**DR. MOODY**—Early, lavender, very beautiful.

**GLORIANA**—Golden-salmon with yellow throat.

**DR. F. E. BENNETT**—Very large, tall vivid flame red. Many open and perfectly placed. One of the finest reds in the world.

**CARA MIA**—Very early, soft salmon pink.

**MRS. LEON DOUGLAS**—Largest glad in existence. Begonia-rose color, striped with flame-scarlet. The size of the individual flower is, we believe, the largest of any variety. The spikes are extra long and large.

**MAID OF ORLEANS**—Large cream white.

**PELEGRINA**—Dark blue.

**QUEEN OF BREMEN**—Bright lavender, early.

**WASAGA**—Glowing buff tinged apricot.

**PICARDY**—Sensational new pink fast growing favorite.

**WURTEMBERGIA**—Very beautiful red with gold throat. Very large tall spikes.

## RAINBOW MIXTURE OF GLADS.

This mixture is made up from the above good named varieties, Guaranteed to Please.

Extra Large Blooming Size Bulbs, 10 for 30c; 25 for 65c; 50 for \$1.15; 100 for \$1.95, Postpaid.

Blooming Size Bulbs, 10 for 20c; 25 for 45c; 50 for 80c; 100 for \$1.45, Postpaid.

**PLEASE REMEMBER THESE ARE ALL GUARANTEED TO BE FIRST CLASS BULBS AND NO JUNK OR CHEAP SCRAP.**

## SELECT CANNAS

The Canna is the grandest of all bedding plants. Being of quick growth, and having a tropical appearance, make them popular in all sections of the country. They will grow anywhere under simple care.

12c each; 5 for 50c; 12 for \$1.00

**EUREKA**—Very best white variety, grows 4 ft.

**ROSEA GIGANTEA**—Large soft pink, green foliage, grows 3½ ft.

**MADAM CROZY**—Brilliant vermilion-scarlet, yellow-golden edge, with green foliage, grows 4 ft.

**APRICOT**—Bright brilliant yellow, with green foliage, grows 4 ft.

**STATUE OF LIBERTY**—Blazing flame-red, bronze foliage, 6-7 ft. tall.



Gladiolus

## SELECT DAHLIAS

Every tuber is guaranteed to be sound, carefully trimmed, no broken necks. There are three general types; the show (S) a very formal flower; the Decorative (D) the less formal and large; the Cactus (C) with slender pointed petals.

Big Blooming Size Tubers, 20c each; 3 for 69c; 6 for \$1.19.

**PRIDE OF CALIFORNIA (D)**—Fine large flowers of brilliant red. Extra good.

**YELLOW DUKE (S)**—Yellow, well formed.

**BONNIE BLUE (S)**—A lovely unique color of bluish-lavender. Long stem, very free bloomer.

**QUEEN MARY (D)**—Clear pink; sure bloomer.

**DAKOTA (D)**—Large flame red.

**PURITY (D)**—A very fine, large white.

**YELLOW COLOSSE (D)**—Rich, deep, golden-yellow.

**D. M. MOORE (B)**—Deep maroon, almost black.

**AGNES HAVILAND (D)**—Rose-pink, gold tinged.

**BIG GUS (D)**—Giant size, Orange-scarlet.

**MINAMOTO (C)**—Large dazzling scarlet.

**MRS. I. DE VER WARNER (D)**—Orchid lavender.

**BASHFUL GIANT (D)**—Apricot and amber.

**JANE COWL (D)**—Large bronzy buff salmon.

**JERSEY BEAUTY (D)**—Wonderful, pink.

**JERSEY BEACON (D)**—Rich scarlet and buff.

**PRIDE OF STRATFORD (D)**—Best large red orange.

**BARBARA REDFERN (D)**—Large old gold and rose.

**JERSEY MAMMOTH (D)**—Giant mahogany and gold.

**LAURA MORRIS (D)**—Large, best deep yellow.

**THE COMMODORE (D)**—Large canary yellow.

**WM. H. HOGAN (D)**—Large red, white bi-color.

**KATHLEEN NORRIS (D)**—Wonderful large pink.

**KEMP'S WHITE WONDER (D)**—White, giant size.

**PURPLE MANITOU (D)**—Purple.

**AIDA (D)**—Very large maroon.

## SPECIAL DAHLIA OFFER

We will select and label 10 different good named varieties of Dahlia Bulbs for only \$1.00 Postpaid. This collection would cost you much more any where else.

# BE SURE TO PLANT GOOD SEED



**BEANS**—5c per pkg.;  $\frac{1}{4}$  lb. 9c;  $\frac{1}{2}$  lb. 16c; 1 lb. 30c; 2 lbs. 55c. Postpaid.

**GOLDEN WAX IMPROVED**—Rustproof. Pods are of good length, oval and thick, entirely stringless, clear, waxy, golden yellow, with fine buttery flavor. Bush Bean.

**BURPEES STRINGLESS**—Extra early, round podded, prolific sort, bearing abundantly, long bright green, stringless pods of excellent quality, rust resistant. Bush Bean.

**WHITE KENTUCKY WONDER**—Very early, white seeded variety, pods 6-7 inches long, slender, straight, very tender, fleshy. Stringless, high quality. Dark green color.

**FORDHOOK BUSH LIMA**—Bush Bean. Plants grow very stiff and erect and will withstand heavy wind and rain. Pods are large, thick, containing 4-5 wonderful beans. Most popular Lima.

**BEETS**—5c per pkg.; 1 oz. 8c;  $\frac{1}{4}$  lb. 27c;  $\frac{1}{2}$  lb. 40c. Postpaid.

**DETROIT DARK RED**—Upright grower, small top, best canner. Leaf stems and veins dark red, blade green, roots very crisp, tender and sweet and remaining so for a long time.

**EARLY BLOOD TURNIP**—Popular everywhere. Roots fine symmetrical in shape; flesh blood-red, tender, sweet, grows to good size, fine for early use and also for winter.

**SWISS CHARD**—5c per pkg.; 1 oz. 10c;  $\frac{1}{4}$  lb. 30c;  $\frac{1}{2}$  lb. 50c. Postpaid.

**SILVER**—Often called Spinach Beet, is grown for its leaf, not for its root. The thick leaf may be stripped from the leaf and used as Asparagus, balance of leaf served as greens.

**BRUSSEL SPROUTS**—5c per pkg.;  $\frac{1}{2}$  oz. 12c; 1 oz. 18c. Postpaid.

**IMPROVED DWARF**—Grows 18 to 30 inches high, producing compact sprouts. 1 to 2 inches in diameter, grayish green in color. Hardy, early and very satisfactory.

**CABBAGE**—5c per pkg.;  $\frac{1}{2}$  oz. 12c; 1 oz. 20c;  $\frac{1}{4}$  lb. 70c. Postpaid.

**EARLY JERSEY WAKEFIELD**—One of the best early cabbage in cultivation. It possesses the merits of large size heads, and is the earliest and surest variety you can grow.

**EARLY FLAT DUTCH**—Medium early, sure solid heads weighing 5-6 lbs. Fine grained of good flavor. Succeeds everywhere but is well suited to the southern states because of its resistance to heat.

**GOLDEN ACRE**—Extra early cabbage, producing a uniform, round tightly folded, well balanced head of good quality, weighing about 3 lbs. A fine variety for home and garden.

**LARGE LATE FLAT DUTCH**—Sure header of extra large heads, often weigh 15 lbs., interior creamy white, compact and crisp. Very best for cooking or slicing and winter keeper.

**CARROTS**—5c per pkg.; 1 oz. 10c;  $\frac{1}{4}$  lb. 30c;  $\frac{1}{2}$  lb. 58c. Postpaid.

**DANVERS HALF LONG**—Well known, very productive, 5-6 inches long, flesh very tender and sweet and a rich orange, fine grained and free from woody fiber. Excellent keeper.

**OXHEART**—Often grows 5 inches in diameter with flesh of bright orange, fine grained and sweet. When young, excellent for table use and when matured equally good for stock.

**RED CORELESS CHANTENAY**—Improved Chantenay with red core. Quality extra fine, tender, and sweet. Good shipper and splendid market gardeners variety.

**CELERY**—5c per pkg.;  $\frac{1}{2}$  oz. 16c; 1 oz. 30c. Postpaid.

**GOLDEN SELF BLANCHING**—Best medium early self blanching, bunches easily, large in size, fine in quality, dwarf compact habit, with thick, solid heavy ribbed stalks, blanching to a clear waxen.

**CUCUMBER**—5c per pkg.; 1 oz. 12c;  $\frac{1}{4}$  lb. 34c;  $\frac{1}{2}$  lb. 55c. Postpaid.

**BOSTON PICKLING**—A favorite with pickle growers. Fine for table use. Very productive. Fruit small and uniform in size. Dark green in color. Excellent for pickling.

**IMPROVED LONG GREEN**—Grows 12-16 inches long. When young used for pickling and when larger used for slicing. Most popular for making sweet pickles from the ripe fruit.

**CAULIFLOWER**—5c per pkg.;  $\frac{1}{4}$  oz. 42c;  $\frac{1}{2}$  oz. 70c. Postpaid.

**EARLY SNOWBALL**—The standard variety for commercial purposes. Dwarf and compact in growth. Fine solid, round heads, pure white. A very good keeper. Weight of heads about 2 lbs.

**POPCORN**—5c per pkg.;  $\frac{1}{4}$  lb. 10c;  $\frac{1}{2}$  lb. 18c; 1 lb. 30c; 2 lbs. 50c. Postpaid.

**SOUTH AMERICAN**—Kernels yellow and pop to immense size. Stalks grow larger than field corn, with two to three ears on a stalk. Most popular popcorn.



**SWEET CORN**—5c per pkg.;  $\frac{1}{4}$  lb. 9c;  $\frac{1}{2}$  lb. 16c; 1 lb. 30c; 2 lbs. 50c. Postpaid.

**GOLDEN BANTAM**—Most popular, finest flavored yellow sweet corn. Stalks 4 to 5 feet high, ears 6-7 inches long with 8 rows, kernels broad, sweet, very tender. Ready for table in 78 days.

**COUNTRY GENTLEMEN**—Market gardeners favorite. Ears average 8-9 inches, often 3 on a stalk. White kernels set irregular on cob. Very small cob, kernels have great depth.

**IMPROVED HYBRID GOLDEN CROSS**—Bright yellow, 12 row, 8 to 12 in. long. Three times as productive as Golden Bantam. 5c per pkg.;  $\frac{1}{4}$  lb. 12c;  $\frac{1}{2}$  lb. 20c; 1 lb. 35c.

**DILL**—5c per pkg.;  $\frac{1}{2}$  oz. 12c; 1 oz. 18c. Postpaid.

**GENUINE DILL**—Seeds, leaves and stalks are used for pickling and for flavoring soups and sauces.

**EGG PLANT**—5c per pkg.;  $\frac{1}{4}$  oz. 12c;  $\frac{1}{2}$  oz. 18c; 1 oz. 30c. Postpaid.

**IMPROVED NEW YORK PURPLE**—Very large, smooth, fine dark color. Ours is the spineless plant, preferred by market gardeners. We have made careful selection of our stock.

**KOHL RABI**—5c per pkg.;  $\frac{1}{4}$  oz. 10c;  $\frac{1}{2}$  oz. 15c. Postpaid.

**EARLY WHITE VIENNA**—White bulbs tinged with green. Small leaves, tops 8-10 inches long. Flesh white, of delicate flavor. A desirable sort for forcing.

**LETTUCE**—5c per pkg.; 1 oz. 10c;  $\frac{1}{4}$  lb. 30c;  $\frac{1}{2}$  lb. 55c. Postpaid.

**BIG BOSTON**—Leader of the head type. Head of medium size, compact with creamy yellow heart. Leaves smooth, glossy waxy at edge, slightly tinged with brown, excellent quality.

**BLACK SEEDED SIMPSON**—Forms large, loose, yellowish-green leaves, crumpled and frilled. Exceedingly tender and crisp. Very popular home garden variety as it is very early.

**EARLY CURLED SIMPSON**—Forms a close, compact mass of curly yellowish green leaves, early, hardy plant. Leaves are tender, sweet, excellent quality. Old favorite with home gardeners.

**LEEK**—5c per pkg.;  $\frac{1}{4}$  oz. 10c;  $\frac{1}{2}$  oz. 15c. Postpaid.

**LONDON FLAG**—This is the variety generally cultivated in this country. It is very hardy and of the best of quality.

**MUSKMELON**—5c per pkg.; 1 oz. 10c;  $\frac{1}{4}$  lb. 26c; 1 lb. 95c. Postpaid.

**HEARTS OF GOLD**—Good shipper, just the right size to serve in halves average  $1\frac{1}{4}$  lbs. each. Flesh deep orange, extremely thick, fine grained, of the very best quality, sweet and melting.

**ROCKY FORD**—The most famous Muskmelon, nearly round and uniform in shape and size. Flesh light green, very deep, ripening clear to the rind. Very delicious, spicy flavor.

**HONEY ROCK**—Most popular variety grown. Very productive, 5-7 melons per vine. Firm flesh, tough rind, perfect distant shipper. Slightly oval, overlaid heavy grey netting. Deep orange flesh.

**MANGEL WURZEL**—5c per pkg.; 1 oz. 8c;  $\frac{1}{4}$  lb. 20c; 1 lb. 60c. Postpaid.

**MAMMOTH LONG RED MANGEL**—Largest and heaviest cropper for stock feeding. Roots frequently 2 feet or more in length, growing one half above the surface, making easy harvesting.

**ONIONS**—5c per pkg.;  $\frac{1}{2}$  oz. 15c; 1 oz. 25c;  $\frac{1}{4}$  lb. 75c. Postpaid.

**RIVER SWEET SPANISH**—Large well shaped onion weighing from 1 to 3 lbs. Unusually mild, but still retaining its genuine onion flavor. Good to store and ship.

**WHITE PORTUGAL (White)**—Grow to good size, mild and of fine flavor. Grown extensively for winter use and for sets and pickling onions.

**PEAS**—5c per pkg.;  $\frac{1}{4}$  lb. 9c;  $\frac{1}{2}$  lb. 16c; 1 lb. 30c; 2 lbs. 50c. Postpaid.

**LAXTON'S PROGRESS**—Dark green luscious Peas. Average 18 in. tall. Pods measure 4-4 $\frac{1}{2}$  in. long and tightly packed with 8-10 luscious peas. Vigorous growing vines.

**AMERICAN WONDER**—12-14 in. tall. Pods are light colored, straight, round, about 2 $\frac{1}{2}$  in. long and blunt at the end. Seed is wrinkled, green, medium size and square at the ends.

**MCLEAN'S LITTLE GEM**—Grows 18-24 in. tall, dark foliage. Pods are almost straight, 2 $\frac{1}{2}$ -3 $\frac{1}{2}$  in. long, light in color and blunt at the ends. Seed is green, wrinkled, medium size.

**PEPPERS**—5c per pkg.;  $\frac{1}{4}$  oz. 12c;  $\frac{1}{2}$  oz. 20c; 1 oz. 30c. Postpaid.

**CALIFORNIA WONDER**—Large as Chinese Giant, much earlier and of the best quality. Heaviest meated, excellent shipper and rapidly replacing other varieties of its type.

**LONG RED CAYENNE**—Favorite hot pepper, conical shaped fruits, 4-5 in. long,  $\frac{1}{2}$  in. through, deep green becoming bright red. Used for seasoning and pickling.

**PUMPKIN**—5c per pkg.; 1 oz. 10c;  $\frac{1}{4}$  lb. 20c;  $\frac{1}{2}$  lb. 36c. Postpaid.

**KENTUCKY FIELD**—About 2 feet in diameter, round, flattened, hard and productive. Fine for market use, and excellent for canning, pies or stock feeding.

**SMALL SUGAR**—Most popular pie pumpkin, looks like Field Pumpkin, but is smaller and much better quality. Flesh tender, sweet, earliest pumpkin, matures in 65 days, excellent keeper.

**PARSNIP**—5c per pkg.; 1 oz. 10c;  $\frac{1}{4}$  lb. 30c. Postpaid.

**IMPROVED HOLLOW CROWN**—Roots 12-15 in. long and 3 in. thick at the shoulder, white, smooth, tender, sugary, excellent flavor. Hardy and will keep through winter protection.

**PARSLEY**—5c per pkg.; 1 oz. 10c;  $\frac{1}{4}$  lb. 30c. Postpaid.

**MOSS CURLED**—A compact-growing, fine cut and much curled variety of a bright green color. Owing to its fine color and density of foliage it is most popular of all.

**RADISH**—5c per pkg.; 1 oz. 9c; ¼ lb. 22c; ½ lb. 35c. Postpaid.

**WHITE ICICLE**—Finest early white variety, very popular with home gardeners. Tops medium, roots 6 in. long, tapering, pure white flesh, very crisp and mild.

**FRENCH BREAKFAST**—Tops medium small roots 1½ to 2 inches long, thicker towards bottom, scarlet with white top, flesh white, crisp and of excellent quality.

**SCARLET GLOBE**—Valuable for outdoor planting or forcing. Mild globe shaped and of the finest. Small tops, skin bright scarlet. Flesh white and very crisp.

**RUTABAGA**—5c per pkg.; 1 oz. 10c; ¼ lb. 30c. Postpaid.

**IMPROVED AMERICAN PURPLE TOP**—Roots are large and globular, deep purplish red above ground, light yellow below, with medium short neck. Flesh a creamy yellow, of finest texture and flavor.

**SALSIFY**—5c per pkg.; ½ oz. 12c; 1 oz. 18c. Postpaid.

**MAMMOTH SANDWICH ISLAND**—A very superior strain, often called "Vegetable Oysters". Strong foliage, large, uniform, smooth, white roots. Standard variety for market gardeners.

**SPINACH**—5c per pkg.; 1 oz. 10c; ¼ lb. 25c. Postpaid.

**KING OF DENMARK**—Best long seasoned, remaining 2 weeks longer than others before bolting to seed. Plant vigorous and spreading, leaves large rounded, crumpled, blistered, deep green.

**NEW ZEALAND**—This variety endures heat and thrives in almost all soils. The leaves are small, broad and pointed, but the plant is large and spreading. Long cutting season.

**SQUASH**—5c per pkg.; 1 oz. 12c; ¼ lb. 35c. Postpaid.

**SUMMER CROOKNECK**—A standard early and productive summer variety. Fruits about a foot long, moderately warted and of a bright yellow color.

**IMPROVED WARTY HUBBARD**—Very best strain of the Hubbard Squash. Dark green rough hard shell. The very best strain for winter keeping, best shipper and seller.

**TURNIPS**—5c per pkg.; 1 oz. 9c; ¼ lb. 22c. Postpaid.

**PURPLE TOP WHITE GLOBE**—Early, globe shaped. Roots are large, white with purple top. The flesh is white, fine grained and tender. Quick grower and a good keeper.

**TOMATOES**—5c per pkg.; ¼ oz. 15c; ½ oz. 22c; 1 oz. 35c. Postpaid.

**JOHN BAER**—Fruits nearly round and uniform in shape, smooth and without core. The cell structure is quite solid, which makes it a good shipper and keeper.

**MARGLOBE**—Wilt resistant. Large, perfect globe-shaped fruits of a beautiful scarlet color. Its spreading habit of growth enables it to bear in great abundance.

**BALTIMORE**—Good wilt resisting strain. Best second early and main crop variety. It is a red tomato, vigorous and very productive. Preferred by canners because of its heavy yield.

**YELLOW CHERRY**—Small round fruits ½ in. in diameter. Bright yellow and very smooth. Used for salads and for pickling.

**WATERMELON**—5c per pkg.; 1 oz. 9c; ¼ lb. 22c; ½ lb. 38c. Postpaid.

**KLECKLEY'S SWEET IMPROVED**—Bright red flesh, wonderful quality, firm, crisp and sweet. Oblong shape. The rind is dark in color, thin, brittle and of the largest size.

**SWEETHEART**—Vigorous and productive, ripening its fruit early. Large oval, mottled light and dark green. Flesh bright red, firm, solid, very tender, melting and sweet.

**BLACK SEEDED KLONDYKE**—For genuine merit not surpassed by any other kind. Rind is dark green, with attractive bright red flesh.

## ZILKE'S LARGE HARDY PHLOX PLANTS

Phlox produce magnificent spikes of showy, lasting and fragrant flowers, year after year with comparatively little care. They are the main standby for harmonious garden color through the difficult month of August. Every Phlox we offer is 2 yr. old, field grown and is heavily rooted. A Bed of Phlox once planted will last for almost a life time, without any work or special care.



Hardy Phlox

**BARON VON DEDEM**—Orange red.

**BEACON**—Bright cherry red.

**BRIDESMAID**—White, red eye.

**B. COMPTE**—French purple or wine color.

**FIREBRAND**—Red flamed with orange.

**MRS. CHAS. DORE**—Lavender.

**MILLY VON HOBOKEN**—Peach pink.

**PAINTED LADY**—Pink with red eye.

**EHINELANDER**—Large salmon pink.

**THOR**—Deep salmon pink, red eye.

**SIEBOLDI**—Orange-scarlet, crimson eye.

**AFRICA**—Carmine red, blood-red eye.

**DAILY SKETCH**—Salmon pink, crimson eye.

**GEN. VON HUETZ**—Deepest red pink.

**GRAF ZEPELIN**—White with vermilion eye.

**SALMON GLOW**—Bright flame, shaded salmon.

**LEO SCHLAGER**—Pure scarlet, dark eye.

**BORDER QUEEN**—Salmon with red eye.

**ROSENBERG**—Deep violet, slightly darker center.

**LILLIAN**—Popular new clear pink with blue eye. Very fragrant. Tall stems, side flower heads.

**MRS. SCHOLTEN**—Now brilliant red. Extremely fragrant and worthwhile.

**MORGENROOD**—Large unusually striking flowers of deep rose with deeper eye, large florets.

SALE ON LARGE PHLOX PLANTS  
3 FOR 39c POSTPAID

NAMED VARIETIES OF LARGE PHLOX  
19c EA.; 3 FOR 47c; 6 FOR 79c PPD.



## THORNLESS BOYSENBERRY

The thornless Boysenberry yields a heavy crop and starts ripening about one week sooner than the thorny variety. The thornless variety has all the characteristics of the ordinary variety except the thorns, and is a very vigorous grower, of large long canes. The flavor is perhaps a little more spicy. Be the first in your neighborhood to have this new variety. Supply of plants is very limited, so please order early. WHILE THEY LAST, 50c each; 3 for \$1.25; 12 for \$3.50; 25 plants for \$5.50; 100 for \$19.50.

## NEW RHUBARB

**MC DONALD**—The very best Rhubarb you can buy. Bright cherry red color the full length of the large, long stalks. The stalks are giant in size. Very tender and stays tender a long time. Very rich in flavor. As fast as you pull up one stalk another comes up to take its place. Large yielder. Strong divisions, 39c each; 3 for 98c; 10 for \$2.98; 25 for \$6.00.



Black Walnut

## BLACK WALNUT TREES

Common black walnut, that will thrive anywhere, and is always a favorite among children. Bears large nuts which are valuable in making cakes, cookies and candies. Big 4 to 5 ft. trees, 59c each; 3 for \$1.69.



New Rhubarb

## ORDERING INSTRUCTIONS

**TERMS**—Terms are cash for all orders under \$3.00 and all orders of \$3.00 or more will be booked if 25 per cent or more accompanies the order, balance before shipment or C. O. D.

**REMITTANCE**—We accept money orders, personal checks, registered cash by mail and good clean postage stamps.

**SHIPPING SEASON**—Plants are dug and shipped from about March 15th to May 25th, according to the weather conditions. At this time the plants are fully dormant and will carry well to any part of the country.

**TRANSPORTATION AND CHARGES**—Read parcel post rate instructions on page 29. For express shipment consult express notice middle of page 29.

**FALL SHIPPING**—Fall shipments are made after October 10th to November 25th, according to the weather conditions.

**PACKING**—No charges are made for wrapping and packing, which is done in the best possible manner. Plenty of damp moss and other materials are used to keep the plants in a perfect growing condition.

**PLANTING INSTRUCTIONS**—Planting instructions are included free with each nursery stock shipment.

**WHEN TO ORDER**—As there may be a shortage of the particular varieties you want it is best to make up your order and send it in as quickly as possible. Stock will then be reserved and shipped at specified time.

**REFERENCE**—State Savings Bank, Bridgman; American Railway Express Agent, Bridgman; Mr. C. A. Boyer, Dept. of Agriculture, Lansing, Michigan.

**IMPORTANT**—A certificate of inspection is attached to each nursery stock shipment that we make.

# PARCEL POST RATES

In small bundle shipments, prepaid parcel post is the cheapest way of shipping. By sending necessary amount for postage in advance you save the 12c O.O.D. fee collected by the Post Office department on delivery. If you wish small shipments prepaid on items not listed as prepaid in our catalog, consult table at right, for correct amount needed for prepaid parcel post. Small shipments are cheapest by being prepaid. If you do not include postage with your remittance, we shall assume that you want your stock shipped O.O.D. for postage charges. For postage rates, first look in which group you live, then consult the group at right for necessary postage, include this amount with your order and we will ship prepaid.

<b>GROUP No. 1</b>	<b>GROUP No. 2</b>
Iowa	Kansas
Illinois	Minnesota
Indiana	Missouri
Michigan	Nebraska
Ohio	New York
Wisconsin	New Jersey
Kentucky	Maryland
	North Carolina
	Delaware
<b>GROUP No. 3</b>	<b>Pennsylvania</b>
All other states	Tennessee
not listed in the	W. Virginia
other two groups.	Virginia

## EXPRESS

NOTICE—1000 strawberry plants are cheaper by express, unless you live in the first group. 250 Red Raspberry, 250 Dewberry, 250 Blackberry or 200 Black Raspberry plants (all 1 yr. plants) can be shipped by parcel post, but it is cheaper in most cases by express. More than 100 2 yr. Transplants are shipped cheapest by express. More than 100 1 yr. Grape, 50 2 yr. Grape or 20 3 yr. Grape plants are cheaper by express. More than 10 large shrubs or 10 4-6 ft. fruit trees are best by express. The above applies mostly to Groups 1 and 2, in the 3rd Group, less by parcel post and more by express for the cheapest rates. All Express SHIPMENTS ARE SENT EXPRESS CHARGES COLLECT.

## PLANTS

	Group No. 1	Group No. 2	Group No. 3
Strawberry plants and 1 yr. Asparagus roots			
For 100 plants or less -----	\$0.12	\$0.15	\$0.20
For 250 plants or less -----	.20	.25	.35
For 500 plants or less -----	.35	.50	.70
For 1000 plants or less -----	.65	1.00	

Red, Black and Purple Raspberry, Boysenberry and Youngberry 1 yr. 2 yr. Asparagus, 1 yr. Grapes			
For 50 plants or less -----	.12	.15	.20
For 100 plants or less -----	.15	.25	.35
For 250 plants or less -----	.30	.40	.65

Red, Black and Purple Raspberry and Blackberry, all 2 yr. plants and 2 year Grape plants			
For each 50 plants or less ----	.30	.40	.60
For each 100 plants or less ----	.50	.70	1.00

Climbing Vines, Evergreens, Roses, 1 yr. Blueberries and 12 to 18 inch Shrubs			
For 10 plants or less -----	.12	.15	.20
For 20 plants or less -----	.20	.25	.35

2 yr. Blueberries, 2 to 4 feet Shade Trees, All 3 1/2 to 5 ft. 7-16 size, Fruit trees, 18 to 24 inch shrubs			
For 5 plants of less -----	.15	.22	.35
For 10 plants or less -----	.25	.40	.60

2 1/2 to 4 ft. Shrubs, All 5 to 7 ft. Shade Trees, All 3 and 4 yr. Blueberry plants, All 4 1/2 to 6 ft. Fruit trees 9-16 size			
For 5 plants or less -----	.25	.40	.60
For 10 plants or less -----	.40	.60	.80

## FREE NURSERY STOCK

If you will be so kind as to give us a few names of land owners that you think might be interested in our catalog we will include a free gift with your order.

---



---



---



---



---



---

DO NOT FORGET SEEDS FOR YOUR GARDEN.





# == WHOLESALE PRICE LIST ==

While our supply of nursery stock lasts, we quote you the following low prices on quantity lots of stock. Following prices apply only to quantities, named, not to smaller orders. This stock is all first class, guaranteed to please or we will refund your money. When ordering from this wholesale price list, these prices are net and we can not allow any discounts, (as quoted on the special yellow sheet), and we can not allow any free premiums.

## STRAWBERRY PLANTS

	2000 plants or more; Per Thousand	3500 plants or more; Per Thousand	5000 plants or more; Per Thousand
BLAKEMORE .....	\$2.55	\$2.40	\$2.20
DUNLAP .....	2.55	2.40	2.20
DORSETT .....	3.45	3.25	3.15
PREMIER .....	3.45	3.25	3.15
CATSKILL .....	3.50	3.30	3.20
FAIRFAX .....	3.50	3.30	3.20
AMBROSIA .....	3.50	3.40	3.30
GEM (Everbearing) .....	4.70	4.35	3.98

## Washington Asparagus Roots

1-year, No. 1 Roots .....	600 or more, 30c per 100
2-year, No. 1 Roots .....	600 or more, 64c per 100
3-year, No. 1 Roots .....	600 or more, 98c per 100

## Giant Victoria Rhubarb Roots

2-year, No. 1 Roots .....	100 or more, \$4.50 per 100
3-year, No. 1 Roots .....	100 or more, \$6.00 per 100

## Peach Trees

ELBERTA, SOUTH HAVEN, GOLDEN JUBILEE, J. H. HALE and HALE-HAVEN are the special varieties.

No. 1 Trees, 5-16 to 7-16 size .....	30 trees or more at 10c each
No. 1 Trees, 7-16 to 9-16 size .....	30 trees or more at 14c each

## 2-Year Apple Trees

ALL THE VARIETIES THAT WE HAVE LISTED WHILE THEY LAST

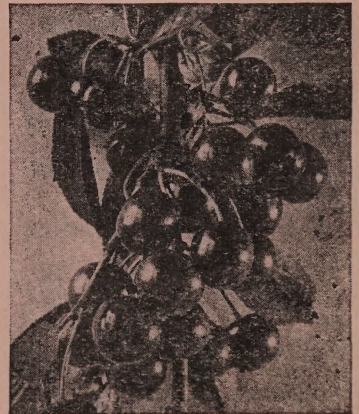
Heavy 2-year, 7-16 to 9-16 size .....	30 trees or more at 16c each
Heavy 2-year, 9-16 to 11-16 size .....	30 trees or more at 21c each

## Hansen Bush Cherry Ornamental Shrub - Valuable Fruit

Shapely, ornamental shrub, with long pointed gray-green leaves, silvery beneath. Covered with snow-white flowers in Spring. Cherries are in large clusters, easy to pick. The fruit is large, sweet, shaped like a plum and as delicious as sweet cherries to eat out of hand. Makes excellent jelly, jam and juice. The bushes reach a height of four to five feet and are perfectly hardy everywhere. Produce an enormous bush in your garden or along the edge of the yard. You will find them most beautiful and enjoyable.

18 to 24 inch Bushes

23c each; 4 for 50c; 10 for \$1.00



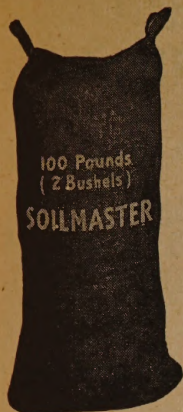
**Zilke Brothers Nursery - Baroda, Mich.**







# SOILMASTER



Soilmaster is a decomposed, concentrated leaf-mold and decayed vegetation. This is the humus to use on lawns, around shrubs and in your garden. Holds seven times its weight in moisture, and is a good fertilizer. Rejuvenates gardens, lawns, shrubbery and trees; is a natural plant food, a natural soil builder; far superior to stable manure, has the same fertilizing value, is clean, odorless and does not burn; and can be applied any time and anywhere. Is ideal for the farm home, garden or suburban home. Requires less water after application than other fertilizer as it holds moisture for an indefinite period. Makes the soil mellow and prevents baking. Soilmaster goes farther, lasts longer and is more economical; two-bushel bag, which is approximately 100 pounds, is enough for 100 square feet of lawn or 8 good sized shrubs or ornamentals. You are assured of a three year's growth in two year's time by using this humus. Note testimonials.

## SODUS ACID HUMUS

Sodus Humus will hold moisture and has the same fertilizer value as Soilmaster—the only difference between the two is that one is sour and the other is sweet. We recommend this Humus for Evergreens, Rhododendrons and Blueberries, or any shrub or ornamental that requires an acid soil.

## PRICE OF SOILMASTER AND SODUS ACID HUMUS

Specify which you want when ordering.

2-bu. bag for 98c, net—not subject to any cash discount. We will ship by freight collect unless otherwise instructed.

## HOTKAPS—An Individual Hothouse for Every Plant!



Matures your crops 2 to 3 weeks earlier. Get premium prices and bigger yields with HOTKAPS. They are miniature hothouses that keep out frost, rain, wind, birds and insects. They maintain a perfect mulch around each plant, promoting sturdy growth.

Millions of HOTKAPS are used every season. Inexpensive to buy. One man can set out 2000 or more per day.

Prices: 1,000 lots, \$10.25; 250 trial package, including Garden Setter with Tamper, \$3.85; 100 trial package, including Garden Setter with Tamper, \$2.65; Germaco HOTKAP Steel Setter with Tamper, \$1.50; Garden Setter, 50c. Postage extra.

Weight: 1,000 package HOTKAPS, 28 lbs., 250 package, 9 lbs.; 100 package, 5 lbs.; Steel HOTKAP Setter, 4 lbs.

Gentlemen: Kent, Ohio

As a result of our many years spent in the care of thousands of fine trees, we know that lawn trees must be supplied with artificial food—more especially with humus.

After vigorous tests and use extending over a period of 4 years, we are glad to say that Soilmaster has proven itself to be an ideal form of humus. Results following its use have been uniformly satisfactory and at times quite amazing.

We therefore take pleasure in recommending the use of Soilmaster. Inasmuch as it is taken from the natural soil deposit, there seems to be no danger of overfeeding or burning in its generous use. Sincerely yours,

The Davey Tree Expert Company,  
Signed, M. L. Davey, President

## STANDARD OIL CO.

Soilmaster Company Benton Harbor, Michigan,  
Berrien Springs, Mich. April 15.

Gentlemen: After using your material at four of our stations, where we usually have difficulty in securing a good lawn, we take pleasure in recommending Soilmaster for either sandy or clay soil. It not only holds the moisture but feeds the lawn throughout the season. Sincerely yours,  
F. F. FOWLER, Agent, Benton Harbor.



## GIVE YOUR GARDEN A

## GOOD START WITH HOTKAPS

An Individual Hothouse for Every Plant

HOTKAPS are waxed paper cones that protect tender plants against frost, rain, wind, birds and insects. Give you vegetables and flowers weeks earlier than your neighbors... stronger plants that bear more heavily.

Home Garden Package—25 HOTKAPS nested in sturdy cardboard setter—49c. Shipping weight 2 lbs.



# ZILKE BROTHERS NURSERY

*Growers of Select Nursery Stock*

**Baroda**

**Michigan**

## HARDY FLOWERING LILIES

One of the most beautiful Garden Flowers. Makes a wonderful showing with a little room. Plant generously in the perennial border where their towering spikes reign supreme. New low prices make it possible for garden lovers to have and enjoy these beautiful lilies.

**PHILIPPENSE FORMOSANUM**, (The New Wonder Lily)—The flowers are very fragrant, white trumpet shaped, up to 7 inches long with bloom spread of 5 to 6 inches across. Almost pure white, just a tinge of copper-rose on the outside at the small end and a light touch of green on the inside back in the throat. Tall blooming stalks to each plant and each stalk has many blooms. Blooms from August until frost.

**TENUIFOLIUM** (Coral Lily)—Lovely nodding deep coral-red flowers with reflexed petals. Wonder lily for border or rockery. One of the loveliest and hardiest lilies.

**TIGRINIUM** (Tiger Lily)—Extra large improved Tiger Lily. Bright orange with black spots on anthers. Blooms in August.

**CROCEUM** (Irish Orange Lily)—Flowers are beautiful orange-yellow with just a tinge of red and the whole thing is oddly and beautifully peppered with small black spots. Very scarce, unusual and beautiful.

**HENRYI** (Orange Speciosum)—Flowers are very rich apricot-yellow with golden brown spots. Blooms during August.

**REGAL** (Regal Lily)—Magnificent, very large, trumpet-shaped, sweet scented, white flowers shaded pink on the outside and tinged with orange-yellow on the inside. Has been known to bear 22 flowers on a stem. One of the very best lilies. Blooms in July.

Blooming size bulbs, 19c each; 3 for 49c; 6 for 89c postpaid.



### SALE ON LILY BULBS

We will label one of each of the above Lilies (6 in all) that we have listed, at a special low price of only 79c postpaid.

## GET THOSE BUGS WITH ZILKE'S "IMPERIAL" MULTI-PURPOSE BUG-DUST-O-CIDE

Zilke's Bug-Dust-O-Cide is new—up-to-the-minute as a dusting insecticide to combat insects on vegetables and flowers. Bug-Dust-O-Cide does not contain such poisons as ARSENIC—LEAD—FLUORENE or PARIS GREEN. Does not stunt or retard growth or development of plant life.

Bug-Dust-O-Cide will not injure tender foliage or leave harmful residue.

**OUR GUARANTEE.** You must be satisfied with Bug-Dust-O-Cide or your money will be refunded.

Be sure to add BUG-DUST to your order!

**SPECIAL TRIAL OFFER AND DUSTER POSTPAID**  
**2 LBS. ----- \$1.00**

3 lbs. Without Duster -- \$1.00 Postpaid  
10 lbs. Without Duster -- 3.00 Postpaid  
25 lbs. Without Duster -- 7.00 Postpaid

**WILL BUGS EAT YOUR GARDEN  
OR WILL YOU?**

